

TROY DIAMOND REPORT®

www.troydiamondreport.com

Gold (Annual Moving Average): \$633.32 EUR ♦♦ Unit: EUR (European Union Euro)

♦♦ World's Largest Economy ♦♦ Second Largest Currency ♦♦ 27 Member Countries ♦♦

Table of Contents

Round Brilliants	Page		Page	Pear/Fancy Shapes	Page
4.0mm / 0.23 carat	pg. 2	2.8mm / 0.08 carat	pg. 10	2.25+ carats	pg. 18
4.2mm / 0.25 carat	pg. 2	3.0mm / 0.10 carat	pg. 10	2.50+ carats	pg. 18
4.4mm / 0.30+ carat	pg. 2	3.2mm / 0.12 carat	pg. 10	2.75+ carats	pg. 18
4.8mm / 0.40+ carat	pg. 2	3.4mm / 0.15 carat	pg. 10	3.00+ carats	pg. 18
5.0mm / 0.50+ carat	pg. 2	3.6mm / 0.17 carat	pg. 10	3.25+ carats	pg. 18
5.4mm / 0.60+ carat	pg. 2	3.8mm / 0.20 carat	pg. 10	3.50+ carats	pg. 18
5.8mm / 0.70+ carat	pg. 3	% Relationships	pg. 11	3.75+ carats	pg. 19
6.0mm / 0.80+ carat	pg. 3	(0.01-0.03 CT.)	pg. 12	4.00+ carats	pg. 19
6.3mm / 0.90+ carat	pg. 3	(0.04-0.07 CT.)	pg. 12	4.25+ carats	pg. 19
6.5mm / 1.00+ carats	pg. 3	(0.08-0.14 CT.)	pg. 12	4.50+ carats	pg. 19
7.0mm / 1.25+ carats	pg. 3	(0.15-0.17 CT.)	pg. 12	4.75+ carats	pg. 19
7.4mm / 1.50+ carats	pg. 3	(0.18-0.22 CT.)	pg. 12	5.00+ carats	pg. 19
7.8mm / 1.75+ carats	pg. 4	(0.23-0.29 CT.)	pg. 12	5.25+ carats	pg. 20
8.0mm / 2.00+ carats	pg. 4	(0.3-0.39 CT.)	pg. 12	5.50+ carats	pg. 20
8.4mm / 2.25+ carats	pg. 4	(0.4-0.49 CT.)	pg. 12	5.75+ carats	pg. 20
8.7mm / 2.50+ carats	pg. 4	(0.5-0.69 CT.)	pg. 12	6-6.99 carats	pg. 20
9.0mm / 2.75+ carats	pg. 4	(0.7-0.89 CT.)	pg. 12	7-7.99 carats	pg. 20
9.3mm / 3.00+ carats	pg. 4	(0.9-0.99 CT.)	pg. 13	8-8.99 carats	pg. 20
9.6mm / 3.25+ carats	pg. 5	(1-1.49 CT.)	pg. 13	9-9.99 carats	pg. 21
9.9mm / 3.50+ carats	pg. 5	(1.5-1.99 CT.)	pg. 13	10-10.99 carats	pg. 21
10.1mm / 3.75+ carats	pg. 5	(2-2.99 CT.)	pg. 13	% Reelationships	pg. 22
10.3mm / 4.00+ carats	pg. 5	(3-3.99 CT.)	pg. 13	(0.18-0.22 CT.)	pg. 23
10.5mm / 4.25+ carats	pg. 5	(4-4.99 CT.)	pg. 13	(0.23-0.29 CT.)	pg. 23
10.7mm / 4.50+ carats	pg. 5	(5-5.99 CT.)	pg. 13	(0.3-0.39 CT.)	pg. 23
10.9mm / 4.75+ carats	pg. 6	(10-10.99 CT.)	pg. 13	(0.4-0.49 CT.)	pg. 23
11.0mm / 5.00+ carats	pg. 6	Pear/Fancy Shapes	pg. 14	(0.5-0.69 CT.)	pg. 23
11.2mm / 5.25+ carats	pg. 6	0.20 carat	pg. 15	(0.7-0.89 CT.)	pg. 23
11.4mm / 5.50+ carats	pg. 6	0.23 carat	pg. 15	(0.9-0.99 CT.)	pg. 23
11.6mm / 5.75+ carats	pg. 6	0.25 carat	pg. 15	(1-1.49 CT.)	pg. 23
11.8+mm / 6-6.99 carats	pg. 6	0.30+ carat	pg. 16	(1.5-1.99 CT.)	pg. 24
12.3+mm / 7-7.99 carats	pg. 7	0.40+ carat	pg. 16	(2-2.99 CT.)	pg. 24
12.8+mm / 8-8.99 carats	pg. 7	0.50+ carat	pg. 16	(3-3.99 CT.)	pg. 24
13.4+mm / 9-9.99 carats	pg. 7	0.60+ carat	pg. 16	(4-4.99 CT.)	pg. 24
14.0+mm / 10-10.99 carats	pg. 7	0.70+ carat	pg. 16	(5-5.99 CT.)	pg. 24
"Melee"/Small Rounds	pg. 8	0.80+ carat	pg. 16	(10-10.99 CT.)	pg. 24
1.5mm / 0.01 carat	pg. 9	0.90+ carat	pg. 17	Trend Charts 1999 - Jan. 2008	
1.7mm / 0.02 carat	pg. 9	1.00+ carats	pg. 17	Exchange to Gold	pg. 25
2.0mm / 0.03 carat	pg. 9	1.25+ carats	pg. 17	"Paper Gold"	pg. 26
2.2mm / 0.04 carat	pg. 9	1.50+ carats	pg. 17	"Traditional Peg"	pg. 27
2.4mm / 0.05 carat	pg. 9	1.75+ carats	pg. 17		
2.6mm / 0.06 carat	pg. 9	2.00+ carats	pg. 17		

TROY DIAMOND REPORT®

www.troydiamondreport.com

Gold (Annual Moving Average): \$633.32 EUR ♦♦ Unit: EUR (European Union Euro)

♦♦ World's Largest Economy ♦♦ Second Largest Currency ♦♦ 27 Member Countries ♦♦

EURs' Each

February-09

Quantity per 1000 EUR

TROY REPORT: 4.0mm / 0.23 carat

ROUNDS

TROY REPORT: 4.0mm / 0.23 carat

	IF-VVS	VS	SI1	SI2	I1	I2	I3		IF-VVS	VS	SI1	SI2	I1	I2	I3	
D-F	411	310	248	204	143	119	85	D-F	2	3	4	5	7	8	12	D-F
G-H	320	262	221	189	138	115	74	G-H	3	4	5	5	7	9	13	G-H
I-J	250	205	186	168	119	92	58	I-J	4	5	5	6	8	11	17	I-J
K-L	204	177	152	143	97	74	50	K-L	5	6	7	7	10	13	20	K-L
M-N	168	151	126	108	74	53	37	M-N	6	7	8	9	13	19	27	M-N

EURs' Each

February-09

Quantity per 1000 EUR

TROY REPORT: 4.2mm / 0.25 carat

ROUNDS

TROY REPORT: 4.2mm / 0.25 carat

	IF-VVS	VS	SI1	SI2	I1	I2	I3		IF-VVS	VS	SI1	SI2	I1	I2	I3	
D-F	446	337	269	221	156	129	92	D-F	2	3	4	5	6	8	11	D-F
G-H	348	285	241	206	150	125	81	G-H	3	4	4	5	7	8	12	G-H
I-J	271	223	202	183	129	100	64	I-J	4	4	5	5	8	10	16	I-J
K-L	221	192	166	156	106	81	54	K-L	5	5	6	6	9	12	19	K-L
M-N	183	164	137	117	81	58	40	M-N	5	6	7	9	12	17	25	M-N

EURs' Each

February-09

EURs' Each

TROY REPORT: 4.4mm / 0.30+ carat

ROUNDS

TROY REPORT: 4.8mm / 0.40+ carat

	IF	VVS1	VVS2	VS1	VS2	SI1	SI2	I1	I2	I3		IF	VVS1	VVS2	VS1	VS2	SI1	SI2	I1	I2	I3	
D	1062	878	762	670	624	485	393	300	231	162	D	1632	1386	1201	1078	893	708	616	462	339	246	D
E	901	808	693	624	577	462	370	277	208	139	E	1386	1232	1078	1016	862	677	585	431	308	216	E
F	855	785	647	577	531	439	346	254	185	139	F	1324	1201	1047	955	801	647	554	431	308	216	F
G	785	693	600	531	439	370	323	231	185	115	G	1201	1047	924	831	708	616	523	400	277	185	G
H	693	600	531	462	393	346	300	208	162	115	H	1047	924	801	739	647	585	493	370	277	185	H
I	554	485	462	416	346	323	277	208	162	115	I	893	770	708	647	585	523	462	339	246	185	I
J	416	393	370	323	300	277	254	185	162	92	J	708	647	616	554	493	462	400	308	246	154	J
K	370	346	323	277	254	231	208	185	139	92	K	647	585	554	493	431	370	339	277	216	154	K
L	300	277	277	254	254	231	208	139	115	69	L	554	523	493	462	431	370	339	246	185	123	L
M	254	254	231	208	208	185	162	115	92	69	M	462	431	400	370	370	339	308	216	154	92	M

EURs' Each

February-09

EURs' Each

TROY REPORT: 5.0mm / 0.50+ carat

ROUNDS

TROY REPORT: 5.4mm / 0.60+ carat

	IF	VVS1	VVS2	VS1	VS2	SI1	SI2	I1	I2	I3		IF	VVS1	VVS2	VS1	VS2	SI1	SI2	I1	I2	I3	
D	2841	2182	1940	1559	1455	1212	970	727	554	381	D	3788	2910	2587	2079	1940	1617	1293	970	739	508	D
E	2148	1940	1801	1490	1316	1109	901	693	520	346	E	2864	2587	2402	1986	1755	1478	1201	924	693	462	E
F	1940	1801	1663	1420	1247	1005	831	658	485	346	F	2587	2402	2217	1894	1663	1339	1109	878	647	462	F
G	1732	1594	1490	1316	1109	901	727	589	450	312	G	2309	2125	1986	1755	1478	1201	970	785	600	416	G
H	1559	1386	1247	1143	970	831	693	554	416	312	H	2079	1848	1663	1524	1293	1109	924	739	554	416	H
I	1282	1143	1039	935	831	727	658	520	416	312	I	1709	1524	1386	1247	1109	970	878	693	554	416	I
J	970	901	866	762	727	658	589	485	416	277	J	1293	1201	1155	1016	970	878	785	647	554	370	J
K	831	797	762	658	624	554	520	450	381	277	K	1109	1062	1016	878	831	739	693	600	508	370	K
L	727	693	693	624	624	554	485	381	346	242	L	970	924	924	831	831	739	647	508	462	323	L
M	624	589	589	554	554	485	450	346	312	208	M	831	785	785	739	739	647	600	462	416	277	M

INFORMATION IS DEEMED TO BE RELIABLE, BUT IS NOT GUARANTEED. PRICES REFLECT OUR OPINION OF CASH BASIS ASKING PRICES AND ARE NOT AN OFFERING TO SELL. © Copyright 2008 by Wayne D. Prentice, G.G. All rights reserved.

TROY DIAMOND REPORT®

www.troydiamondreport.com

Gold (Annual Moving Average): \$633.32 EUR ♦♦ Unit: EUR (European Union Euro)

♦♦ World's Largest Economy ♦♦ Second Largest Currency ♦♦ 27 Member Countries ♦♦

EURs' Each

TROY REPORT: 5.8mm / 0.70+ carat

February-09

ROUNDS

EURs' Each

TROY REPORT: 6.0mm / 0.80+ carat

	IF	VVS1	VVS2	VS1	VS2	SI1	SI2	I1	I2	I3		IF	VVS1	VVS2	VS1	VS2	SI1	SI2	I1	I2	I3	
D	4995	3831	3298	2910	2667	2279	2037	1406	921	582	D	6343	4865	4188	3695	3387	2895	2587	1786	1170	739	D
E	3686	3298	2958	2764	2473	2182	1940	1358	873	582	E	4681	4188	3757	3510	3141	2771	2463	1724	1109	739	E
F	3249	3007	2764	2570	2328	2037	1794	1309	824	533	F	4126	3818	3510	3264	2956	2587	2279	1663	1047	677	F
G	2910	2667	2473	2279	2085	1843	1649	1261	824	485	G	3695	3387	3141	2895	2648	2340	2094	1601	1047	616	G
H	2619	2376	2182	2037	1891	1697	1552	1164	776	485	H	3326	3018	2771	2587	2402	2156	1971	1478	985	616	H
I	2182	2037	1940	1843	1697	1552	1358	1115	727	485	I	2771	2587	2463	2340	2156	1971	1724	1416	924	616	I
J	1649	1600	1552	1455	1406	1358	1261	1018	679	436	J	2094	2032	1971	1848	1786	1724	1601	1293	862	554	J
K	1455	1406	1358	1261	1212	1115	1018	824	630	436	K	1848	1786	1724	1601	1540	1416	1293	1047	801	554	K
L	1212	1164	1115	1067	1067	1018	921	630	533	388	L	1540	1478	1416	1355	1355	1293	1170	801	677	493	L
M	1115	1067	1018	970	970	921	873	582	485	339	M	1416	1355	1293	1232	1232	1170	1109	739	616	431	M

EURs' Each

TROY REPORT: 6.3mm / 0.90+ carat

February-09

ROUNDS

EURs' Each

TROY REPORT: 6.5mm / 1.00+ carats

	IF	VVS1	VVS2	VS1	VS2	SI1	SI2	I1	I2	I3		IF	VVS1	VVS2	VS1	VS2	SI1	SI2	I1	I2	I3	
D	8359	6977	6055	4805	4344	4147	3554	2238	1580	921	D	15377	11320	9684	7329	5758	4842	4057	2748	1832	1047	D
E	6911	6516	5529	4410	4147	3883	3423	2172	1514	856	E	10535	9946	8441	6740	5431	4515	3861	2617	1767	982	E
F	6516	6187	5134	4278	4015	3686	3291	2106	1448	856	F	9554	8703	7721	6151	5169	4319	3664	2487	1701	916	F
G	5529	5068	4344	3883	3686	3423	3028	2040	1382	790	G	6740	6478	6216	5431	4842	4057	3533	2421	1636	851	G
H	4476	4212	3949	3686	3488	3159	2896	1909	1316	790	H	5562	5300	4973	4580	4188	3861	3403	2290	1570	851	H
I	3752	3554	3291	3159	2962	2830	2567	1777	1251	724	I	4711	4580	4253	3861	3664	3468	3075	2094	1440	785	I
J	3094	2962	2830	2699	2567	2501	2304	1645	1185	724	J	3926	3795	3664	3533	3206	3075	2879	1832	1309	785	J
K	2567	2501	2435	2304	2172	2106	1909	1316	1053	658	K	3533	3403	3272	3141	2748	2683	2421	1701	1178	720	K
L	2172	2106	2040	1975	1843	1843	1711	1185	921	592	L	3141	3010	2945	2814	2552	2421	2159	1570	1047	654	L
M	1975	1909	1843	1777	1711	1711	1580	1119	856	592	M	2617	2552	2487	2356	2094	1963	1767	1309	982	654	M

EURs' Each

TROY REPORT: 7.0mm / 1.25+ carats

February-09

ROUNDS

EURs' Each

TROY REPORT: 7.4mm / 1.50+ carats

	IF	VVS1	VVS2	VS1	VS2	SI1	SI2	I1	I2	I3		IF	VVS1	VVS2	VS1	VS2	SI1	SI2	I1	I2	I3	
D	22614	16647	14242	10778	8468	7121	5966	4042	2694	1540	D	29002	23478	21566	16573	13386	10624	8711	5312	3293	1912	D
E	15493	14627	12413	9911	7987	6640	5677	3849	2598	1443	E	22947	21885	18379	15617	12748	10199	8286	5099	3187	1806	E
F	14049	12798	11355	9045	7602	6351	5389	3657	2502	1347	F	19866	18166	17316	14236	12111	9667	7755	4887	3081	1700	F
G	9911	9527	9142	7987	7121	5966	5196	3560	2406	1251	G	13917	13598	12961	11792	10624	8818	7224	4674	2975	1594	G
H	8179	7794	7313	6736	6159	5677	5004	3368	2309	1251	H	11261	10942	10624	9667	9030	8180	6905	4462	2868	1594	H
I	6928	6736	6255	5677	5389	5100	4523	3079	2117	1155	I	9774	9667	9349	8393	7755	7224	6162	4249	2656	1487	I
J	5774	5581	5389	5196	4715	4523	4234	2694	1925	1155	J	8074	7968	7649	7012	6374	6162	5418	3612	2443	1487	J
K	5196	5004	4811	4619	4042	3945	3560	2502	1732	1059	K	6587	6374	6162	6055	5524	5099	4674	3293	2231	1381	K
L	4619	4426	4330	4138	3753	3560	3176	2309	1540	962	L	5949	5737	5524	5206	4887	4674	4249	2975	2125	1275	L
M	3849	3753	3657	3464	3079	2887	2598	1925	1443	962	M	4993	4887	4781	4674	4143	3931	3612	2550	1912	1275	M

INFORMATION IS DEEMED TO BE RELIABLE, BUT IS NOT GUARANTEED. PRICES REFLECT OUR OPINION OF CASH BASIS ASKING PRICES AND ARE NOT AN OFFERING TO SELL. © Copyright 2008 by Wayne D. Prentice, G.G. All rights reserved.

TROY DIAMOND REPORT®

www.troydiamondreport.com

Gold (Annual Moving Average): \$633.32 EUR ♦♦ Unit: EUR (European Union Euro)

♦♦ World's Largest Economy ♦♦ Second Largest Currency ♦♦ 27 Member Countries ♦♦

EURs' Each

TROY REPORT: 7.8mm / 1.75+ carats

February-09

ROUNDS

EURs' Each

TROY REPORT: 8.0mm / 2.00+ carats

	IF	VVS1	VVS2	VS1	VS2	SI1	SI2	I1	I2	I3		IF	VVS1	VVS2	VS1	VS2	SI1	SI2	I1	I2	I3	
D	39721	32155	29536	22697	18333	14550	11931	7275	4510	2619	D	49269	39784	35843	29315	21925	16259	13303	7144	4188	2340	D
E	31427	29972	25171	21388	17460	13968	11349	6984	4365	2473	E	38553	36089	30793	26236	21062	16012	12933	6898	4065	2217	E
F	27208	24880	23716	19497	16587	13240	10621	6693	4219	2328	F	33872	30547	27467	23156	20200	15396	12440	6651	3941	2094	F
G	19060	18624	17751	16150	14550	12076	9894	6402	4074	2182	G	24388	22417	20447	19338	17614	14411	11948	6282	3818	2094	G
H	15423	14986	14550	13240	12367	11203	9457	6111	3928	2182	H	18968	17737	16505	15643	14534	12933	11209	5912	3695	1971	H
I	13386	13240	12804	11494	10621	9894	8439	5820	3637	2037	I	15396	14904	14042	12933	11948	11209	10100	5666	3449	1848	I
J	11058	10912	10476	9603	8730	8439	7420	4947	3346	2037	J	12317	11824	11332	10593	9854	9238	8622	5173	3079	1848	J
K	9021	8730	8439	8293	7566	6984	6402	4510	3055	1891	K	11085	10716	10346	9607	8992	8376	7760	4434	2956	1724	K
L	8148	7857	7566	7129	6693	6402	5820	4074	2910	1746	L	8622	8376	8129	7760	7021	6405	5789	3818	2833	1601	L
M	6838	6693	6547	6402	5674	5383	4947	3492	2619	1746	M	7390	7267	7144	7021	6035	5420	4927	3202	2587	1601	M

EURs' Each

TROY REPORT: 8.4mm / 2.25+ carats

February-09

ROUNDS

EURs' Each

TROY REPORT: 8.7mm / 2.50+ carats

	IF	VVS1	VVS2	VS1	VS2	SI1	SI2	I1	I2	I3		IF	VVS1	VVS2	VS1	VS2	SI1	SI2	I1	I2	I3	
D	67344	54380	48993	40070	29968	22224	18183	9765	5724	3199	D	80062	64650	58245	47637	35627	26420	21617	11609	6805	3803	D
E	52697	49330	42090	35861	28790	21887	17678	9428	5556	3030	E	62648	58645	50039	42633	34226	26020	21016	11209	6605	3603	E
F	46299	41753	37544	31652	27611	21045	17004	9091	5388	2862	F	55042	49638	44634	37629	32825	25019	20216	10808	6405	3403	F
G	33335	30642	27948	26433	24076	19698	16331	8586	5219	2862	G	39630	36428	33226	31424	28622	23418	19415	10208	6205	3403	G
H	25927	24244	22560	21382	19867	17678	15321	8081	5051	2694	H	30824	28822	26821	25420	23618	21016	18214	9607	6005	3202	H
I	21045	20372	19193	17678	16331	15321	13806	7745	4714	2525	I	25019	24219	22818	21016	19415	18214	16413	9207	5604	3002	I
J	16836	16163	15489	14479	13469	12627	11785	7071	4209	2525	J	20015	19215	18414	17213	16012	15012	14011	8406	5004	3002	J
K	15152	14647	14142	13132	12290	11449	10607	6061	4041	2357	K	18014	17413	16813	15612	14611	13610	12610	7206	4804	2802	K
L	11785	11449	11112	10607	9597	8755	7913	5219	3872	2189	L	14011	13610	13210	12610	11409	10408	9407	6205	4604	2602	L
M	10102	9933	9765	9597	8250	7408	6734	4377	3536	2189	M	12009	11809	11609	11409	9808	8807	8006	5204	4203	2602	M

EURs' Each

TROY REPORT: 9.0mm / 2.75+ carats

February-09

ROUNDS

EURs' Each

TROY REPORT: 9.3mm / 3.00+ carats

	IF	VVS1	VVS2	VS1	VS2	SI1	SI2	I1	I2	I3		IF	VVS1	VVS2	VS1	VS2	SI1	SI2	I1	I2	I3	
D	97806	78978	71154	58195	43524	32276	26408	14182	8314	4646	D	145871	113176	100600	77965	61732	40012	29723	16691	8917	4801	D
E	76533	71643	61129	52082	41812	31787	25674	13693	8069	4401	E	110661	100600	84367	67905	56702	37725	28122	15547	8688	4573	E
F	67242	60640	54527	45969	40100	30564	24696	13204	7824	4157	F	95570	88025	74307	61732	52815	35439	26979	14633	8231	4344	F
G	48414	44502	40590	38389	34966	28608	23718	12470	7580	4157	G	75450	67905	61275	55330	46413	32009	25607	13947	7774	4115	G
H	37655	35210	32765	31053	28853	25674	22251	11737	7335	3912	H	56473	54187	50300	43898	37725	27208	24007	13032	7545	4115	H
I	30564	29586	27875	25674	23718	22251	20050	11248	6846	3668	I	40240	39097	37725	33838	28808	23778	20806	12118	7088	3887	I
J	24452	23473	22495	21028	19561	18339	17116	10270	6113	3668	J	32695	32238	31095	28122	25379	20577	18291	10746	6402	3658	J
K	22006	21273	20539	19072	17850	16627	15404	8803	5868	3423	K	30180	28808	27665	25150	22635	17605	15319	9603	5945	3658	K
L	17116	16627	16138	15404	13937	12715	11492	7580	5624	3179	L	22635	21492	20349	19434	17605	13261	11203	7545	5716	3430	L
M	14671	14426	14182	13937	11981	10759	9781	6357	5135	3179	M	18748	18291	17605	16462	15090	11889	10060	6630	5259	3430	M

INFORMATION IS DEEMED TO BE RELIABLE, BUT IS NOT GUARANTEED. PRICES REFLECT OUR OPINION OF CASH BASIS ASKING PRICES AND ARE NOT AN OFFERING TO SELL. © Copyright 2008 by Wayne D. Prentice, G.G. All rights reserved.

TROY DIAMOND REPORT®

www.troydiamondreport.com

Gold (Annual Moving Average): \$633.32 EUR ♦♦ Unit: EUR (European Union Euro)

♦♦ World's Largest Economy ♦♦ Second Largest Currency ♦♦ 27 Member Countries ♦♦

EURs' Each

TROY REPORT: 9.6mm / 3.25+ carats

February-09

ROUNDS

EURs' Each

TROY REPORT: 9.9mm / 3.50+ carats

	IF	VVS1	VVS2	VS1	VS2	SI1	SI2	I1	I2	I3		IF	VVS1	VVS2	VS1	VS2	SI1	SI2	I1	I2	I3	
D	175585	136230	121093	93847	74307	48162	35778	20090	10733	5779	D	198546	154044	136928	106120	84024	54460	40456	22718	12137	6535	D
E	133202	121093	101553	81738	68253	45410	33851	18714	10458	5504	E	150621	136928	114833	92427	77178	51348	38278	21162	11826	6224	E
F	115039	105957	89444	74307	63574	42658	32475	17614	9908	5229	F	130082	119812	101140	84024	71887	48236	36722	19917	11203	5913	F
G	90820	81738	73757	66601	55868	38530	30824	16788	9357	4954	G	102696	92427	83402	75311	63174	43568	34855	18983	10581	5602	G
H	67977	65225	60547	52841	45410	32750	28897	15687	9082	4954	H	76867	73755	68464	59751	51348	37033	32676	17738	10270	5602	H
I	48437	47061	45410	40731	34677	28622	25044	14586	8532	4679	I	54771	53215	51348	46058	39211	32365	28319	16494	9647	5290	I
J	39355	38805	37429	33851	30549	24769	22017	12935	7706	4403	J	44502	43879	42323	38278	34543	28008	24896	14626	8714	4979	J
K	36328	34677	33301	30273	27246	21191	18439	11559	7156	4403	K	41079	39211	37655	34232	30809	23962	20850	13070	8091	4979	K
L	27246	25870	24494	23393	21191	15962	13485	9082	6880	4128	L	30809	29253	27697	26452	23962	18050	15249	10270	7780	4668	L
M	22567	22017	21191	19815	18164	14311	12109	7981	6330	4128	M	25518	24896	23962	22406	20539	16182	13693	9025	7158	4668	M

EURs' Each

TROY REPORT: 10.1mm / 3.75+ carats

February-09

ROUNDS

EURs' Each

TROY REPORT: 10.3mm / 4.00+ carats

	IF	VVS1	VVS2	VS1	VS2	SI1	SI2	I1	I2	I3		IF	VVS1	VVS2	VS1	VS2	SI1	SI2	I1	I2	I3	
D	232988	180766	160681	124528	98600	63907	47474	26658	14242	7669	D	271316	215834	197543	159741	125293	74993	53958	24388	13109	7012	D
E	176749	160681	134753	108460	90566	60255	44918	24833	13877	7304	E	214919	196323	169801	142670	118587	72249	52434	22864	12804	6707	E
F	152647	140596	118685	98600	84358	56604	43092	23372	13147	6939	F	194189	169497	153035	132000	108527	68591	51215	21644	12194	6402	F
G	120511	108460	97870	88375	74133	51126	40901	22276	12416	6573	G	144804	130171	121940	114928	95113	60970	47252	20425	11584	6097	G
H	90201	86549	80341	70115	60255	43457	38344	20816	12051	6573	H	108527	103039	96028	89321	74993	53654	42984	19206	10975	6097	H
I	64273	62447	60255	54047	46013	37979	33232	19355	11321	6208	I	78346	74383	71335	65848	57617	44813	38106	18291	10365	5792	I
J	52221	51491	49665	44918	40536	32867	29215	17164	10225	5843	J	63104	60055	58226	53654	47557	39326	33229	16157	9755	5487	J
K	48204	46013	44187	40170	36153	28119	24467	15338	9495	5843	K	53654	50300	48471	45118	40240	32009	28351	14328	8841	5182	K
L	36153	34327	32501	31041	28119	21181	17894	12051	9130	5478	L	36887	35058	33533	32009	28351	22864	19815	11584	8536	4878	L
M	29945	29215	28119	26293	24102	18990	16068	10590	8399	5478	M	31704	30485	29570	27741	25303	20425	17681	10365	7621	4878	M

EURs' Each

TROY REPORT: 10.5mm / 4.25+ carats

February-09

ROUNDS

EURs' Each

TROY REPORT: 10.7mm / 4.50+ carats

	IF	VVS1	VVS2	VS1	VS2	SI1	SI2	I1	I2	I3		IF	VVS1	VVS2	VS1	VS2	SI1	SI2	I1	I2	I3	
D	320304	254804	233210	188584	147916	88534	63701	28791	15475	8278	D	373060	296771	271621	219644	172278	103115	74193	33533	18024	9641	D
E	253724	231771	200460	168430	139998	85294	61901	26992	15115	7918	E	295514	269945	233477	196171	163057	99343	72097	31438	17605	9222	E
F	229251	200100	180666	155833	128122	80976	60462	25552	14396	7558	F	267010	233058	210423	181500	149224	94313	70420	29761	16767	8803	F
G	170949	153674	143957	135679	112286	71978	55783	24113	13676	7198	G	199105	178985	167667	158027	130781	83834	64971	28084	15928	8383	G
H	128122	121644	113366	105448	88534	63341	50745	22673	12956	7198	H	149224	141679	132038	122816	103115	73774	59103	26408	15090	8383	H
I	92492	87814	84215	77737	68020	52904	44987	21594	12236	6838	I	107726	102277	98085	90540	79223	61618	52396	25150	14252	7964	I
J	74498	70899	68739	63341	56143	46426	39228	19074	11517	6478	J	86768	82576	80061	73774	65390	54073	45689	22216	13413	7545	J
K	63341	59382	57223	53264	47506	37789	33470	16915	10437	6118	K	73774	69163	66648	62037	55330	44013	38983	19701	12156	7126	K
L	43547	41388	39588	37789	33470	26992	23393	13676	10077	5758	L	50719	48204	46109	44013	38983	31438	27246	15928	11737	6707	L
M	37429	35989	34910	32750	29871	24113	20874	12236	8997	5758	M	43594	41917	40659	38144	34791	28084	24312	14252	10479	6707	M

INFORMATION IS DEEMED TO BE RELIABLE, BUT IS NOT GUARANTEED. PRICES REFLECT OUR OPINION OF CASH BASIS ASKING PRICES AND ARE NOT AN OFFERING TO SELL. © Copyright 2008 by Wayne D. Prentice, G.G. All rights reserved.

TROY DIAMOND REPORT®

www.troydiamondreport.com

Gold (Annual Moving Average): \$633.32 EUR ♦♦ Unit: EUR (European Union Euro)

♦♦ World's Largest Economy ♦♦ Second Largest Currency ♦♦ 27 Member Countries ♦♦

EURs' Each

TROY REPORT: 10.9mm / 4.75+ carats

February-09

ROUNDS

EURs' Each

TROY REPORT: 11.0mm / 5.00+ carats

	IF	VVS1	VVS2	VS1	VS2	SI1	SI2	I1	I2	I3		IF	VVS1	VVS2	VS1	VS2	SI1	SI2	I1	I2	I3	
D	411685	327498	299744	242385	190115	113792	81874	37005	19890	10639	D	503997	386546	347931	289205	221228	131932	89296	33385	19307	10056	D
E	326110	297893	257650	216482	179939	109628	79562	34693	19428	10176	E	383730	347529	304490	260647	208356	121876	86480	31374	18503	9251	E
F	294655	257188	232209	200292	164674	104078	77711	32842	18503	9714	F	345518	304490	278747	242546	180602	111418	82860	30167	17698	8849	F
G	219720	197516	185027	174388	144321	92513	71698	30992	17578	9251	G	259038	235708	215999	193474	159284	102569	78033	28559	16894	8447	G
H	164674	156348	145709	135532	113792	81412	65222	29142	16652	9251	H	200714	184625	168938	149228	127508	88089	69586	26547	16089	8045	H
I	118880	112866	108241	99915	87425	67997	57821	27754	15727	8789	I	143999	137161	128312	115039	104178	74413	60335	24536	15285	7642	I
J	95751	91126	88350	81412	72161	59671	50420	24516	14802	8326	J	108603	103776	97340	92916	86480	66368	53497	21721	14480	7240	J
K	81412	76324	73548	68460	61059	48570	43019	21741	13414	7864	K	81653	75620	72804	68380	63955	52290	44246	19709	13274	7240	K
L	55971	53195	50882	48570	43019	34693	30067	17578	12952	7401	L	59933	57519	55106	53095	48670	40223	30570	17296	12067	6838	L
M	48107	46257	44869	42094	38393	30992	26829	15727	11564	7401	M	53095	50681	48670	46257	44246	36201	27352	14883	10860	6838	M

EURs' Each

TROY REPORT: 11.2mm / 5.25+ carats

February-09

ROUNDS

EURs' Each

TROY REPORT: 11.4mm / 5.50+ carats

	IF	VVS1	VVS2	VS1	VS2	SI1	SI2	I1	I2	I3		IF	VVS1	VVS2	VS1	VS2	SI1	SI2	I1	I2	I3	
D	557050	427235	384556	319648	244515	145820	98695	36900	21339	11114	D	612755	469958	423011	351613	268967	160402	108565	40590	23473	12226	D
E	424123	384111	336542	288083	230289	134706	95583	34677	20450	10225	E	466535	422522	370196	316892	253318	148176	105141	38144	22495	11248	E
F	381888	336542	308089	268077	199613	123147	91582	33343	19561	9781	F	420077	370196	338898	294885	219575	135461	100740	36677	21517	10759	F
G	286305	260520	238736	213840	176051	113366	86247	31565	18672	9336	G	314935	286572	262609	235223	193656	124703	94872	34721	20539	10270	G
H	221842	204059	186721	164937	140930	97361	76911	29342	17783	8891	H	244026	224465	205393	181430	155023	107098	84602	32276	19561	9781	H
I	159157	151599	141819	127148	115144	82246	66686	27119	16894	8447	I	175073	166759	156001	139863	126659	90471	73355	29831	18583	9292	I
J	120035	114700	107587	102696	95583	73355	59128	24007	16005	8002	J	132038	126170	118345	112966	105141	80690	65041	26408	17605	8803	J
K	90248	83580	80468	75577	70687	57794	48903	21784	14671	8002	K	99273	91938	88514	83135	77756	63574	53793	23962	16138	8803	K
L	66241	63574	60906	58684	53793	44457	33788	19117	13337	7558	L	72865	69931	66997	64552	59173	48903	37166	21028	14671	8314	L
M	58684	56016	53793	51126	48903	40012	30231	16449	12003	7558	M	64552	61618	59173	56238	53793	44013	33254	18094	13204	8314	M

EURs' Each

TROY REPORT: 11.6mm / 5.75+ carats

February-09

ROUNDS

EURs' Each

TROY REPORT: 11.8+mm / 6-6.99 carats

	IF	VVS1	VVS2	VS1	VS2	SI1	SI2	I1	I2	I3		IF	VVS1	VVS2	VS1	VS2	SI1	SI2	I1	I2	I3	
D	671112	514716	463298	385100	294582	175678	118904	44455	25709	13390	D	732123	561508	505416	420109	321363	191649	129714	48497	28046	14607	D
E	510967	462762	405453	347072	277443	162288	115155	41777	24638	12319	E	557418	504832	442312	378624	302665	177042	125624	45575	26878	13439	E
F	460084	405453	371174	322969	240486	148362	110335	40170	23567	11783	F	501910	442312	404917	352330	262349	161850	120365	43822	25709	12855	F
G	344929	313864	287620	257626	212099	136579	103907	38028	22495	11248	G	376286	342397	313767	281046	231381	148995	113353	41485	24540	12270	G
H	267267	245842	224954	198709	169787	117297	92660	35350	21424	10712	H	291564	268192	245404	216774	185222	127961	101083	38564	23372	11686	H
I	191746	182641	170858	153183	138722	99087	80341	32672	20353	10176	I	209178	199245	186390	167109	151333	108095	87644	35642	22203	11102	I
J	144613	138186	129616	123725	115155	88375	71235	28923	19282	9641	J	157760	150748	141400	134972	125624	96409	77711	31552	21035	10517	J
K	108728	100694	96944	91053	85161	69629	58916	26245	17675	9641	K	118612	109848	105758	99330	92903	75958	64273	28630	19282	10517	K
L	79805	76591	73378	70700	64808	53560	40706	23031	16068	9105	L	87060	83554	80049	77127	70700	58430	44406	25125	17529	9933	L
M	70700	67486	64808	61595	58916	48204	36421	19817	14461	9105	M	77127	73621	70700	67194	64273	52587	39732	21619	15776	9933	M

INFORMATION IS DEEMED TO BE RELIABLE, BUT IS NOT GUARANTEED. PRICES REFLECT OUR OPINION OF CASH BASIS ASKING PRICES AND ARE NOT AN OFFERING TO SELL. © Copyright 2008 by Wayne D. Prentice, G.G. All rights reserved.

TROY DIAMOND REPORT®

www.troydiamondreport.com

Gold (Annual Moving Average): \$633.32 EUR ♦♦ Unit: EUR (European Union Euro)

♦♦ World's Largest Economy ♦♦ Second Largest Currency ♦♦ 27 Member Countries ♦♦

1000EUR's Each

TROY REPORT: 12.3+mm / 7-7.99 carats

February-09

ROUNDS

1000EUR's Each

TROY REPORT: 12.8+mm / 8-8.99 carats

	IF	VVS1	VVS2	VS1	VS2	SI1	SI2	I1	I2	I3		IF	VVS1	VVS2	VS1	VS2	SI1	SI2	I1	I2	I3	
D	891.3	683.6	615.3	511.4	391.2	233.3	157.9	59.0	34.1	17.8	D	1103.5	846.3	761.8	633.2	484.4	288.9	195.5	73.1	42.3	22.0	D
E	678.6	614.6	538.5	460.9	368.5	215.5	152.9	55.5	32.7	16.4	E	840.2	760.9	666.7	570.7	456.2	266.8	189.3	68.7	40.5	20.3	E
F	611.0	538.5	492.9	428.9	319.4	197.0	146.5	53.3	31.3	15.6	F	756.5	666.7	610.3	531.0	395.4	243.9	181.4	66.1	38.7	19.4	F
G	458.1	416.8	382.0	342.1	281.7	181.4	138.0	50.5	29.9	14.9	G	567.2	516.1	472.9	423.6	348.7	224.6	170.9	62.5	37.0	18.5	G
H	354.9	326.5	298.8	263.9	225.5	155.8	123.1	46.9	28.5	14.2	H	439.5	404.2	369.9	326.7	279.2	192.9	152.4	58.1	35.2	17.6	H
I	254.7	242.6	226.9	203.4	184.2	131.6	106.7	43.4	27.0	13.5	I	315.3	300.3	280.9	251.9	228.1	162.9	132.1	53.7	33.5	16.7	I
J	192.1	183.5	172.1	164.3	152.9	117.4	94.6	38.4	25.6	12.8	J	237.8	227.2	213.1	203.4	189.3	145.3	117.1	47.6	31.7	15.9	J
K	144.4	133.7	128.7	120.9	113.1	92.5	78.2	34.9	23.5	12.8	K	178.8	165.6	159.4	149.7	140.0	114.5	96.9	43.2	29.1	15.9	K
L	106.0	101.7	97.5	93.9	86.1	71.1	54.1	30.6	21.3	12.1	L	131.2	125.9	120.7	116.2	106.6	88.1	66.9	37.9	26.4	15.0	L
M	93.9	89.6	86.1	81.8	78.2	64.0	48.4	26.3	19.2	12.1	M	116.2	111.0	106.6	101.3	96.9	79.3	59.9	32.6	23.8	15.0	M

1000EUR's Each

TROY REPORT: 13.4+mm / 9-9.99 carats

February-09

ROUNDS

1000EUR's Each

TROY REPORT: 14.0+mm / 10-10.99 carats

	IF	VVS1	VVS2	VS1	VS2	SI1	SI2	I1	I2	I3		IF	VVS1	VVS2	VS1	VS2	SI1	SI2	I1	I2	I3	
D	1336.9	1025.4	922.9	767.2	586.8	350.0	236.9	88.6	51.2	26.7	D	1615.7	1235.5	1141.5	931.5	715.6	444.6	299.8	88.9	52.5	25.4	D
E	1017.9	921.9	807.7	691.4	552.7	323.3	229.4	83.2	49.1	24.5	E	1235.5	1141.5	999.2	855.3	670.7	410.7	291.3	84.7	50.8	23.7	E
F	916.5	807.7	739.4	643.4	479.1	295.6	219.8	80.0	46.9	23.5	F	1141.5	999.2	904.4	779.9	581.8	381.1	278.6	82.1	49.1	22.9	F
G	687.1	625.2	573.0	513.2	422.5	272.1	207.0	75.8	44.8	22.4	G	845.1	756.2	693.5	622.4	511.5	347.2	262.5	77.9	46.6	22.0	G
H	532.4	489.7	448.1	395.8	338.2	233.7	184.6	70.4	42.7	21.3	H	640.2	596.2	551.3	480.1	409.0	296.4	232.9	74.5	44.9	21.2	H
I	382.0	363.8	340.4	305.2	276.3	197.4	160.0	65.1	40.5	20.3	I	462.4	444.6	418.3	369.2	337.9	254.0	203.2	70.3	42.3	20.3	I
J	288.1	275.3	258.2	246.5	229.4	176.1	141.9	57.6	38.4	19.2	J	342.1	327.7	315.0	298.1	271.0	219.3	175.3	63.5	39.8	19.5	J
K	216.6	200.6	193.1	181.4	169.6	138.7	117.4	52.3	35.2	19.2	K	261.7	240.5	231.2	221.9	204.1	171.1	144.8	57.6	37.3	18.6	K
L	159.0	152.6	146.2	140.8	129.1	106.7	81.1	45.9	32.0	18.1	L	192.2	184.6	177.8	164.3	150.7	130.4	99.9	50.8	34.7	17.8	L
M	140.8	134.4	129.1	122.7	117.4	96.0	72.6	39.5	28.8	18.1	M	168.5	160.0	151.6	146.5	132.9	110.1	88.9	44.0	31.3	16.9	M

"Melee"

Small Diamonds

1 point to 20 points each in size
(0.01-0.20 carats)

TROY DIAMOND REPORT®

www.troydiamondreport.com

Gold (Annual Moving Average): \$633.32 EUR ♦♦ Unit: EUR (European Union Euro)

♦♦ World's Largest Economy ♦♦ Second Largest Currency ♦♦ 27 Member Countries ♦♦

EURs' Each

February-09

Quantity per 1000 EUR

TROY REPORT: 1.5mm / 0.01 carat

ROUNDS

TROY REPORT: 1.5mm / 0.01 carat

	IF-VVS	VS	SI1	SI2	I1	I2	I3		IF-VVS	VS	SI1	SI2	I1	I2	I3	
D-F	7	6	5	4	3	3	2	D-F	153	176	213	236	309	333	481	D-F
G-H	6	5	4	4	3	3	2	G-H	176	197	236	265	342	382	520	G-H
I-J	5	5	4	3	3	2	2	I-J	194	216	260	295	371	419	619	I-J
K-L	4	3	3	3	2	1	1	K-L	260	302	361	394	590	722	928	K-L
M-N	3	2	2	2	1	1	1	M-N	351	448	565	649	999	1181	1443	M-N

EURs' Each

February-09

Quantity per 1000 EUR

TROY REPORT: 1.7mm / 0.02 carat

ROUNDS

TROY REPORT: 1.7mm / 0.02 carat

	IF-VVS	VS	SI1	SI2	I1	I2	I3		IF-VVS	VS	SI1	SI2	I1	I2	I3	
D-F	13	11	9	8	7	6	4	D-F	76	88	106	118	140	167	241	D-F
G-H	11	10	8	8	6	5	4	G-H	88	98	118	133	161	191	260	G-H
I-J	10	9	8	7	5	5	3	I-J	97	108	130	148	186	210	309	I-J
K-L	8	7	6	5	3	3	2	K-L	130	151	180	197	295	361	464	K-L
M-N	6	4	4	3	2	2	1	M-N	176	224	282	325	500	590	722	M-N

EURs' Each

February-09

Quantity per 1000 EUR

TROY REPORT: 2.0mm / 0.03 carat

ROUNDS

TROY REPORT: 2.0mm / 0.03 carat

	IF-VVS	VS	SI1	SI2	I1	I2	I3		IF-VVS	VS	SI1	SI2	I1	I2	I3	
D-F	20	17	14	13	10	9	6	D-F	51	59	71	79	103	111	160	D-F
G-H	17	15	13	11	9	8	6	G-H	59	66	79	88	114	127	173	G-H
I-J	15	14	12	10	8	7	5	I-J	65	72	87	98	124	140	206	I-J
K-L	12	10	8	8	5	4	3	K-L	87	101	120	131	197	241	309	K-L
M-N	9	7	5	5	3	3	2	M-N	117	149	188	216	333	394	481	M-N

EURs' Each

February-09

Quantity per 1000 EUR

TROY REPORT: 2.2mm / 0.04 carat

ROUNDS

TROY REPORT: 2.2mm / 0.04 carat

	IF-VVS	VS	SI1	SI2	I1	I2	I3		IF-VVS	VS	SI1	SI2	I1	I2	I3	
D-F	27	24	19	18	14	13	9	D-F	36	42	52	56	72	79	108	D-F
G-H	25	22	18	16	13	11	8	G-H	41	46	57	62	79	88	125	G-H
I-J	22	19	16	14	12	10	7	I-J	46	52	62	69	85	96	141	I-J
K-L	16	14	12	11	8	7	5	K-L	61	71	81	90	125	141	203	K-L
M-N	12	10	8	7	6	4	3	M-N	83	96	125	135	180	232	325	M-N

EURs' Each

February-09

Quantity per 1000 EUR

TROY REPORT: 2.4mm / 0.05 carat

ROUNDS

TROY REPORT: 2.4mm / 0.05 carat

	IF-VVS	VS	SI1	SI2	I1	I2	I3		IF-VVS	VS	SI1	SI2	I1	I2	I3	
D-F	34	30	24	22	17	16	12	D-F	29	34	41	45	58	63	87	D-F
G-H	31	27	22	20	16	14	10	G-H	32	37	46	50	63	70	100	G-H
I-J	27	24	20	18	15	13	9	I-J	37	42	50	55	68	76	113	I-J
K-L	20	18	15	14	10	9	6	K-L	49	56	65	72	100	113	162	K-L
M-N	15	13	10	9	7	5	4	M-N	67	76	100	108	144	186	260	M-N

EURs' Each

February-09

Quantity per 1000 EUR

TROY REPORT: 2.6mm / 0.06 carat

ROUNDS

TROY REPORT: 2.6mm / 0.06 carat

	IF-VVS	VS	SI1	SI2	I1	I2	I3		IF-VVS	VS	SI1	SI2	I1	I2	I3	
D-F	41	36	29	27	21	19	14	D-F	24	28	34	37	48	53	72	D-F
G-H	37	32	26	24	19	17	12	G-H	27	31	38	42	53	59	83	G-H
I-J	32	29	24	22	18	16	11	I-J	31	35	42	46	57	64	94	I-J
K-L	24	21	18	17	12	11	7	K-L	41	47	54	60	83	94	135	K-L
M-N	18	16	12	11	8	6	5	M-N	56	64	83	90	120	155	216	M-N

INFORMATION IS DEEMED TO BE RELIABLE, BUT IS NOT GUARANTEED. PRICES REFLECT OUR OPINION OF CASH BASIS ASKING PRICES AND ARE NOT AN OFFERING TO SELL. © Copyright 2008 by Wayne D. Prentice, G.G. All rights reserved.

TROY DIAMOND REPORT®

www.troydiamondreport.com

Gold (Annual Moving Average): \$633.32 EUR ♦♦ Unit: EUR (European Union Euro)

♦♦ World's Largest Economy ♦♦ Second Largest Currency ♦♦ 27 Member Countries ♦♦

EURs' Each

February-09

Quantity per 1000 EUR

TROY REPORT: 2.8mm / 0.08 carat

ROUNDS

TROY REPORT: 2.8mm / 0.08 carat

	IF-VVS	VS	SI1	SI2	I1	I2	I3		IF-VVS	VS	SI1	SI2	I1	I2	I3	
D-F	70	60	51	45	34	28	22	D-F	14	17	20	22	30	35	46	D-F
G-H	63	52	45	41	30	25	19	G-H	16	19	22	25	33	41	52	G-H
I-J	55	44	40	36	26	22	17	I-J	18	23	25	28	38	45	60	I-J
K-L	42	36	30	26	18	15	11	K-L	24	28	33	38	54	68	90	K-L
M-N	30	25	22	19	14	10	8	M-N	34	41	46	52	71	96	125	M-N

EURs' Each

February-09

Quantity per 1000 EUR

TROY REPORT: 3.0mm / 0.10 carat

ROUNDS

TROY REPORT: 3.0mm / 0.10 carat

	IF-VVS	VS	SI1	SI2	I1	I2	I3		IF-VVS	VS	SI1	SI2	I1	I2	I3	
D-F	87	75	63	56	48	35	27	D-F	11	13	16	18	21	28	37	D-F
G-H	79	65	56	51	42	31	24	G-H	13	15	18	20	24	32	42	G-H
I-J	69	55	50	45	33	28	21	I-J	14	18	20	22	30	36	48	I-J
K-L	52	45	38	33	23	18	14	K-L	19	22	27	30	43	54	72	K-L
M-N	37	31	27	24	18	13	10	M-N	27	32	37	42	56	76	100	M-N

EURs' Each

February-09

Quantity per 1000 EUR

TROY REPORT: 3.2mm / 0.12 carat

ROUNDS

TROY REPORT: 3.2mm / 0.12 carat

	IF-VVS	VS	SI1	SI2	I1	I2	I3		IF-VVS	VS	SI1	SI2	I1	I2	I3	
D-F	141	122	94	80	55	44	34	D-F	7	8	11	12	18	23	29	D-F
G-H	127	105	85	68	48	40	30	G-H	8	9	12	15	21	25	33	G-H
I-J	103	90	73	62	42	36	28	I-J	10	11	14	16	24	28	36	I-J
K-L	79	67	55	48	30	24	18	K-L	13	15	18	21	33	42	57	K-L
M-N	53	44	37	32	24	17	13	M-N	19	23	27	31	42	60	77	M-N

EURs' Each

February-09

Quantity per 1000 EUR

TROY REPORT: 3.4mm / 0.15 carat

ROUNDS

TROY REPORT: 3.4mm / 0.15 carat

	IF-VVS	VS	SI1	SI2	I1	I2	I3		IF-VVS	VS	SI1	SI2	I1	I2	I3	
D-F	177	152	118	100	68	55	43	D-F	6	7	8	10	15	18	23	D-F
G-H	158	132	106	85	60	50	38	G-H	6	8	9	12	17	20	26	G-H
I-J	129	112	91	77	53	45	35	I-J	8	9	11	13	19	22	29	I-J
K-L	99	83	68	60	38	30	22	K-L	10	12	15	17	26	33	46	K-L
M-N	66	55	46	40	30	21	16	M-N	15	18	22	25	33	48	62	M-N

EURs' Each

February-09

Quantity per 1000 EUR

TROY REPORT: 3.6mm / 0.17 carat

ROUNDS

TROY REPORT: 3.6mm / 0.17 carat

	IF-VVS	VS	SI1	SI2	I1	I2	I3		IF-VVS	VS	SI1	SI2	I1	I2	I3	
D-F	200	173	133	114	77	63	48	D-F	5	6	7	9	13	16	21	D-F
G-H	179	149	120	97	68	56	43	G-H	6	7	8	10	15	18	23	G-H
I-J	147	127	103	88	60	51	39	I-J	7	8	10	11	17	20	25	I-J
K-L	113	94	77	68	43	34	25	K-L	9	11	13	15	23	29	40	K-L
M-N	75	63	52	46	34	24	18	M-N	13	16	19	22	29	42	55	M-N

EURs' Each

February-09

Quantity per 1000 EUR

TROY REPORT: 3.8mm / 0.20 carat

ROUNDS

TROY REPORT: 3.8mm / 0.20 carat

	IF-VVS	VS	SI1	SI2	I1	I2	I3		IF-VVS	VS	SI1	SI2	I1	I2	I3	
D-F	246	209	177	154	103	86	62	D-F	4	5	6	6	10	12	16	D-F
G-H	223	192	162	143	92	79	54	G-H	4	5	6	7	11	13	19	G-H
I-J	185	162	139	123	82	66	48	I-J	5	6	7	8	12	15	21	I-J
K-L	154	126	114	97	66	51	34	K-L	6	8	9	10	15	20	30	K-L
M-N	128	102	91	79	49	38	25	M-N	8	10	11	13	20	26	41	M-N

INFORMATION IS DEEMED TO BE RELIABLE, BUT IS NOT GUARANTEED. PRICES REFLECT OUR OPINION OF CASH BASIS ASKING PRICES AND ARE NOT AN OFFERING TO SELL. © Copyright 2008 by Wayne D. Prentice, G.G. All rights reserved.

"Percentage Relationships"

TROY DIAMOND REPORT[®]

www.troydiamondreport.com

Percent (%) Change from Top Quality (D, IF)

February-09

TROY REPORT: (0.01-0.03 CT.)								ROUNDS			TROY REPORT: (0.04-0.07 CT.)								(% increase)		
IF-VVS		VS	SI1	SI2	I1	I2	I3	IF-VVS		VS	SI1	SI2	I1	I2	I3						
D-F	100%	85%	72%	65%	49%	46%	32%	D-F	100%	87%	71%	65%	51%	46%	34%	D-F					
G-H	87%	78%	65%	58%	45%	40%	29%	G-H	90%	79%	64%	58%	46%	42%	29%	G-H					
I-J	79%	71%	59%	52%	41%	36%	25%	I-J	79%	70%	58%	53%	43%	38%	26%	I-J					
K-L	59%	51%	42%	39%	26%	21%	16%	K-L	60%	52%	45%	40%	29%	26%	18%	K-L					
M-N	44%	34%	27%	24%	15%	13%	11%	M-N	44%	38%	29%	27%	20%	16%	11%	M-N					

TROY REPORT: (0.08-0.14 CT.)								ROUNDS			TROY REPORT: (0.15-0.17 CT.)								34%						
IF		VVS1	VVS2	VS1	VS2	SI1	SI2	I1	I2	I3	IF		VVS1	VVS2	VS1	VS2	SI1	SI2	I1	I2	I3				
D-F	100%			87%		73%	65%	49%	41%	31%	D-F	100%			86%		67%	57%	39%	31%	24%	D-F			
G-H	90%			74%		65%	58%	43%	35%	27%	G-H	90%			75%		60%	48%	34%	28%	22%	G-H			
I-J	80%			64%		58%	52%	38%	32%	24%	I-J	73%			63%		52%	44%	30%	25%	20%	I-J			
K-L	60%			51%		43%	38%	27%	21%	16%	K-L	56%			47%		39%	34%	22%	17%	12%	K-L			
M-N	42%			35%		31%	27%	20%	15%	12%	M-N	37%			31%		26%	23%	17%	12%	9%	M-N			

TROY REPORT: (0.18-0.22 CT.)								ROUNDS			TROY REPORT: (0.23-0.29 CT.)								46%		
IF-VVS		VS	SI1	SI2	I1	I2	I3	IF-VVS		VS	SI1	SI2	I1	I2	I3						
D-F	100%	85%	72%	63%	42%	35%	25%	D-F	100%	75%	60%	50%	35%	29%	21%	D-F					
G-H	91%	78%	66%	58%	38%	32%	22%	G-H	78%	64%	54%	46%	34%	28%	18%	G-H					
I-J	75%	66%	56%	50%	33%	27%	19%	I-J	61%	50%	45%	41%	29%	22%	14%	I-J					
K-L	63%	51%	46%	39%	27%	21%	14%	K-L	50%	43%	37%	35%	24%	18%	12%	K-L					
M-N	52%	41%	37%	32%	20%	16%	10%	M-N	41%	37%	31%	26%	18%	13%	9%	M-N					

TROY REPORT: (0.3-0.39 CT.)								ROUNDS			TROY REPORT: (0.4-0.49 CT.)								20%						
IF		VVS1	VVS2	VS1	VS2	SI1	SI2	I1	I2	I3	IF		VVS1	VVS2	VS1	VS2	SI1	SI2	I1	I2	I3				
D	100%	83%	72%	63%	59%	46%	37%	28%	22%	15%	D	100%	85%	74%	66%	55%	43%	38%	28%	21%	15%	D			
E	85%	76%	65%	59%	54%	43%	35%	26%	20%	13%	E	85%	75%	66%	62%	53%	42%	36%	26%	19%	13%	E			
F	80%	74%	61%	54%	50%	41%	33%	24%	17%	13%	F	81%	74%	64%	58%	49%	40%	34%	26%	19%	13%	F			
G	74%	65%	57%	50%	41%	35%	30%	22%	17%	11%	G	74%	64%	57%	51%	43%	38%	32%	25%	17%	11%	G			
H	65%	57%	50%	43%	37%	33%	28%	20%	15%	11%	H	64%	57%	49%	45%	40%	36%	30%	23%	17%	11%	H			
I	52%	46%	43%	39%	33%	30%	26%	20%	15%	11%	I	55%	47%	43%	40%	36%	32%	28%	21%	15%	11%	I			
J	39%	37%	35%	30%	28%	26%	24%	17%	15%	9%	J	43%	40%	38%	34%	30%	28%	25%	19%	15%	9%	J			
K	35%	33%	30%	26%	24%	22%	20%	17%	13%	9%	K	40%	36%	34%	30%	26%	23%	21%	17%	13%	9%	K			
L	28%	26%	26%	24%	24%	22%	20%	13%	11%	7%	L	34%	32%	30%	28%	26%	23%	21%	15%	11%	8%	L			
M	24%	24%	22%	20%	20%	17%	15%	11%	9%	7%	M	28%	26%	25%	23%	23%	21%	19%	13%	9%	6%	M			

TROY REPORT: (0.5-0.69 CT.)								ROUNDS			TROY REPORT: (0.7-0.89 CT.)								26%						
IF		VVS1	VVS2	VS1	VS2	SI1	SI2	I1	I2	I3	IF		VVS1	VVS2	VS1	VS2	SI1	SI2	I1	I2	I3				
D	100%	77%	68%	55%	51%	43%	34%	26%	20%	13%	D	100%	77%	66%	58%	53%	46%	41%	28%	18%	12%	D			
E	76%	68%	63%	52%	46%	39%	32%	24%	18%	12%	E	74%	66%	59%	55%	50%	44%	39%	27%	17%	12%	E			
F	68%	63%	59%	50%	44%	35%	29%	23%	17%	12%	F	65%	60%	55%	51%	47%	41%	36%	26%	17%	11%	F			
G	61%	56%	52%	46%	39%	32%	26%	21%	16%	11%	G	58%	53%	50%	46%	42%	37%	33%	25%	17%	10%	G			
H	55%	49%	44%	40%	34%	29%	24%	20%	15%	11%	H	52%	48%	44%	41%	38%	34%	31%	23%	16%	10%	H			
I	45%	40%	37%	33%	29%	26%	23%	18%	15%	11%	I	44%	41%	39%	37%	34%	31%	27%	22%	15%	10%	I			
J	34%	32%	30%	27%	26%	23%	21%	17%	15%	10%	J	33%	32%	31%	29%	28%	27%	25%	20%	14%	9%	J			
K	29%	28%	27%	23%	22%	20%	18%	16%	13%	10%	K	29%	28%	27%	25%	24%	22%	20%	17%	13%	9%	K			
L	26%	24%	24%	22%	22%	20%	17%	13%	12%	9%	L	24%	23%	22%	21%	21%	20%	18%	13%	11%	8%	L			
M	22%	21%	21%	20%	20%	17%	16%	12%	11%	7%	M	22%	21%	20%	19%	19%	18%	17%	12%	10%	7%	M			

Information is deemed to be reliable, but is not guaranteed. PRICES REFLECT OUR OPINION AND ARE NOT AN OFFERING TO SELL.

© Copyright 2008 by Wayne D. Prentice, G.G. All rights reserved.

TROY DIAMOND REPORT®

www.troydiamondreport.com

Percent (%) Change from Top Quality (D, IF)

February-09

(% increase)

TROY REPORT: (0.9-0.99 CT.) 14%										ROUNDS TROY REPORT: (1-1.49 CT.) 87%												
IF	VVS1	VVS2	VS1	VS2	SI1	SI2	I1	I2	I3	IF	VVS1	VVS2	VS1	VS2	SI1	SI2	I1	I2	I3			
D	100%	83%	72%	57%	52%	50%	43%	27%	19%	11%	D	100%	74%	63%	48%	37%	31%	26%	18%	12%	7%	D
E	83%	78%	66%	53%	50%	46%	41%	26%	18%	10%	E	69%	65%	55%	44%	35%	29%	25%	17%	11%	6%	E
F	78%	74%	61%	51%	48%	44%	39%	25%	17%	10%	F	62%	57%	50%	40%	34%	28%	24%	16%	11%	6%	F
G	66%	61%	52%	46%	44%	41%	36%	24%	17%	9%	G	44%	42%	40%	35%	31%	26%	23%	16%	11%	6%	G
H	54%	50%	47%	44%	42%	38%	35%	23%	16%	9%	H	36%	34%	32%	30%	27%	25%	22%	15%	10%	6%	H
I	45%	43%	39%	38%	35%	34%	31%	21%	15%	9%	I	31%	30%	28%	25%	24%	23%	20%	14%	9%	5%	I
J	37%	35%	34%	32%	31%	30%	28%	20%	14%	9%	J	26%	25%	24%	23%	21%	20%	19%	12%	9%	5%	J
K	31%	30%	29%	28%	26%	25%	23%	16%	13%	8%	K	23%	22%	21%	20%	18%	17%	16%	11%	8%	5%	K
L	26%	25%	24%	24%	22%	22%	20%	14%	11%	7%	L	20%	20%	19%	18%	17%	16%	14%	10%	7%	4%	L
M	24%	23%	22%	21%	20%	20%	19%	13%	10%	7%	M	17%	17%	16%	15%	14%	13%	11%	9%	6%	4%	M

TROY REPORT: (1.5-1.99 CT.) 20%										ROUNDS TROY REPORT: (2-2.99 CT.) 51%												
IF	VVS1	VVS2	VS1	VS2	SI1	SI2	I1	I2	I3	IF	VVS1	VVS2	VS1	VS2	SI1	SI2	I1	I2	I3			
D	100%	81%	74%	57%	46%	37%	30%	18%	11%	7%	D	100%	81%	73%	60%	45%	33%	27%	15%	9%	5%	D
E	79%	75%	63%	54%	44%	35%	29%	18%	11%	6%	E	78%	73%	63%	53%	43%	33%	26%	14%	8%	5%	E
F	68%	63%	60%	49%	42%	33%	27%	17%	11%	6%	F	69%	62%	56%	47%	41%	31%	25%	14%	8%	4%	F
G	48%	47%	45%	41%	37%	30%	25%	16%	10%	5%	G	50%	46%	42%	39%	36%	29%	24%	13%	8%	4%	G
H	39%	38%	37%	33%	31%	28%	24%	15%	10%	5%	H	39%	36%	34%	32%	30%	26%	23%	12%	8%	4%	H
I	34%	33%	32%	29%	27%	25%	21%	15%	9%	5%	I	31%	30%	29%	26%	24%	23%	21%	12%	7%	4%	I
J	28%	27%	26%	24%	22%	21%	19%	12%	8%	5%	J	25%	24%	23%	22%	20%	19%	18%	11%	6%	4%	J
K	23%	22%	21%	21%	19%	18%	16%	11%	8%	5%	K	23%	22%	21%	20%	18%	17%	16%	9%	6%	4%	K
L	21%	20%	19%	18%	17%	16%	15%	10%	7%	4%	L	18%	17%	17%	16%	14%	13%	12%	8%	6%	3%	L
M	17%	17%	16%	16%	14%	14%	12%	9%	7%	4%	M	15%	15%	15%	14%	12%	11%	10%	7%	5%	3%	M

TROY REPORT: (3-3.99 CT.) 56%										ROUNDS TROY REPORT: (4-4.99 CT.) 45%												
IF	VVS1	VVS2	VS1	VS2	SI1	SI2	I1	I2	I3	IF	VVS1	VVS2	VS1	VS2	SI1	SI2	I1	I2	I3			
D	100%	78%	69%	53%	42%	27%	20%	11%	6%	3%	D	100%	80%	73%	59%	46%	28%	20%	9%	5%	3%	D
E	76%	69%	58%	47%	39%	26%	19%	11%	6%	3%	E	79%	72%	63%	53%	44%	27%	19%	8%	5%	2%	E
F	66%	60%	51%	42%	36%	24%	18%	10%	6%	3%	F	72%	62%	56%	49%	40%	25%	19%	8%	4%	2%	F
G	52%	47%	42%	38%	32%	22%	18%	10%	5%	3%	G	53%	48%	45%	42%	35%	22%	17%	8%	4%	2%	G
H	39%	37%	34%	30%	26%	19%	16%	9%	5%	3%	H	40%	38%	35%	33%	28%	20%	16%	7%	4%	2%	H
I	28%	27%	26%	23%	20%	16%	14%	8%	5%	3%	I	29%	27%	26%	24%	21%	17%	14%	7%	4%	2%	I
J	22%	22%	21%	19%	17%	14%	13%	7%	4%	3%	J	23%	22%	21%	20%	18%	14%	12%	6%	4%	2%	J
K	21%	20%	19%	17%	16%	12%	11%	7%	4%	3%	K	20%	19%	18%	17%	15%	12%	10%	5%	3%	2%	K
L	16%	15%	14%	13%	12%	9%	8%	5%	4%	2%	L	14%	13%	12%	12%	10%	8%	7%	4%	3%	2%	L
M	13%	13%	12%	11%	10%	8%	7%	5%	4%	2%	M	12%	11%	11%	10%	9%	8%	7%	4%	3%	2%	M

TROY REPORT: (5-5.99 CT.) 43%										ROUNDS TROY REPORT: (10-10.99 CT.) 104%												
IF	VVS1	VVS2	VS1	VS2	SI1	SI2	I1	I2	I3	IF	VVS1	VVS2	VS1	VS2	SI1	SI2	I1	I2	I3			
D	100%	77%	69%	57%	44%	26%	18%	7%	4%	2%	D	100%	76%	71%	58%	44%	28%	19%	6%	3%	2%	D
E	76%	69%	60%	52%	41%	24%	17%	6%	4%	2%	E	76%	71%	62%	53%	42%	25%	18%	5%	3%	1%	E
F	69%	60%	55%	48%	36%	22%	16%	6%	4%	2%	F	71%	62%	56%	48%	36%	24%	17%	5%	3%	1%	F
G	51%	47%	43%	38%	32%	20%	15%	6%	3%	2%	G	52%	47%	43%	39%	32%	21%	16%	5%	3%	1%	G
H	40%	37%	34%	30%	25%	17%	14%	5%	3%	2%	H	40%	37%	34%	30%	25%	18%	14%	5%	3%	1%	H
I	29%	27%	25%	23%	21%	15%	12%	5%	3%	2%	I	29%	28%	26%	23%	21%	16%	13%	4%	3%	1%	I
J	22%	21%	19%	18%	17%	13%	11%	4%	3%	1%	J	21%	20%	19%	18%	17%	14%	11%	4%	2%	1%	J
K	16%	15%	14%	14%	13%	10%	9%	4%	3%	1%	K	16%	15%	14%	14%	13%	11%	9%	4%	2%	1%	K
L	12%	11%	11%	11%	10%	8%	6%	3%	2%	1%	L	12%	11%	11%	10%	9%	8%	6%	3%	2%	1%	L
M	11%	10%	10%	9%	9%	7%	5%	3%	2%	1%	M	10%	10%	9%	9%	8%	7%	6%	3%	2%	1%	M

Information is deemed to be reliable, but is not guaranteed. PRICES REFLECT OUR OPINION AND ARE NOT AN OFFERING TO SELL.

© Copyright 2008 by Wayne D. Prentice, G.G. All rights reserved.

"Pear Shapes"

TROY DIAMOND REPORT®

www.troydiamondreport.com

Gold (Annual Moving Average): 633.32 EUR ♦♦ Unit: EUR (European Union Euro)

♦♦ World's Largest Economy ♦♦ Second Largest Currency ♦♦ 27 Member Countries ♦♦

The marketplace for *FANCY SHAPES* is more complex than Round Brilliants with "CUT" playing a very important role. Proportions, length to width ratios, and one's subjective tastes adds another dimension to Cut, when examined by a professionally trained gemologist. Price Guidelines below are for well shaped diamonds with Cut Grades: Good to Excellent, and actual transaction prices can vary by 20% or more in the Fancy Shape marketplace. Poorly shaped diamonds can trade at a substantial discount, while fine shaped diamonds may trade at a premium.

Shape Adjustments

Shape	♦	Adjustment	>	In Sizes	♦	Adjustment	>	In Sizes
Princess	♦	-7 to -10%	>	under 4 carat	♦	-10 to -15%	>	4 carat plus
Emerald Cuts	♦	-9 to -12%	>	under 3 carat	♦	-5 to -8%	>	3 carat plus
Asschers	♦	-4 to -8%	>	under 4 carat	♦	0 to -3%	>	4 carat plus
Radiants	♦	-5 to -10%	>	under 2 carat	♦	-10 to -15%	>	2 carat plus
Marquises	♦	same	>	under 1.49 carat	♦	+5 to +8%	>	1.5 to 2.99 carats
Ovals	♦	same	>	under 0.69 carat	♦	0 to -5%	>	0.70 to 5 carat plus
Hearts	♦	same	>	under 0.89 and 2+ carat	♦	+3 to +8%	>	0.90 to 1.99 carat

EURs' Each

February-09

Quantity per 1000EUR

TROY REPORT: 0.20 carat

PEAR

TROY REPORT: 0.20 carat

	IF-VVS	VS	SI1	SI2	I1	I2	I3		IF-VVS	VS	SI1	SI2	I1	I2	I3	
D-F	208	177	162	146	108	85	54	D-F	5	6	6	7	9	12	19	D-F
G-H	177	162	146	131	100	77	46	G-H	6	6	7	8	10	13	22	G-H
I-J	154	146	131	115	85	66	40	I-J	6	7	8	9	12	15	25	I-J
K-L	129	122	99	91	68	59	35	K-L	8	8	10	11	15	17	28	K-L
M-N	99	91	83	75	57	43	28	M-N	10	11	12	13	18	23	36	M-N

EURs' Each

February-09

Quantity per 1000EUR

TROY REPORT: 0.23 carat

PEAR

TROY REPORT: 0.23 carat

	IF-VVS	VS	SI1	SI2	I1	I2	I3		IF-VVS	VS	SI1	SI2	I1	I2	I3	
D-F	292	239	221	186	133	106	71	D-F	3	4	5	5	8	9	14	D-F
G-H	257	204	186	168	124	97	62	G-H	4	5	5	6	8	10	16	G-H
I-J	212	186	168	151	115	89	53	I-J	5	5	6	7	9	11	19	I-J
K-L	166	149	140	122	96	71	46	K-L	6	7	7	8	10	14	22	K-L
M-N	122	113	104	96	71	53	35	M-N	8	9	10	10	14	19	28	M-N

EURs' Each

February-09

Quantity per 1000EUR

TROY REPORT: 0.25 carat

PEAR

TROY REPORT: 0.25 carat

	IF-VVS	VS	SI1	SI2	I1	I2	I3		IF-VVS	VS	SI1	SI2	I1	I2	I3	
D-F	318	260	241	202	144	115	77	D-F	3	4	4	5	7	9	13	D-F
G-H	279	221	202	183	135	106	67	G-H	4	5	5	5	7	9	15	G-H
I-J	231	202	183	164	125	96	58	I-J	4	5	5	6	8	10	17	I-J
K-L	181	162	152	133	104	77	50	K-L	6	6	7	8	10	13	20	K-L
M-N	133	123	114	104	77	58	38	M-N	8	8	9	10	13	17	26	M-N

TROY DIAMOND REPORT®

www.troydiamondreport.com

Gold (Annual Moving Average): 633.32 EUR ♦♦ Unit: EUR (European Union Euro)

♦♦ World's Largest Economy ♦♦ Second Largest Currency ♦♦ 27 Member Countries ♦♦

EURs' Each

February-09

EURs' Each

TROY REPORT: 0.30+ carat

PEAR

TROY REPORT: 0.40+ carat

	IF	VVS1	VVS2	VS1	VS2	SI1	SI2	I1	I2	I3		IF	VVS1	VVS2	VS1	VS2	SI1	SI2	I1	I2	I3	
D	716	670	600	554	462	416	346	277	208	139	D	1139	1047	955	893	770	677	616	400	308	246	D
E	670	624	554	462	393	370	323	254	185	139	E	1047	985	893	831	739	616	554	370	277	216	E
F	624	577	485	416	370	346	300	231	162	115	F	985	924	831	770	708	585	523	339	246	185	F
G	577	508	439	393	346	323	277	208	162	115	G	924	831	770	708	647	554	462	308	246	185	G
H	462	439	393	370	323	300	254	185	139	115	H	801	739	677	647	585	523	431	277	216	185	H
I	370	346	323	323	300	277	231	185	139	92	I	647	616	585	554	493	462	400	277	216	154	I
J	300	277	277	254	254	231	208	162	115	92	J	523	493	493	462	400	370	339	246	185	154	J
K	254	231	208	208	208	185	162	139	115	92	K	462	400	370	339	339	308	246	185	154	154	K
L	231	208	208	185	185	185	162	92	92	69	L	400	370	339	308	308	277	246	185	154	123	L
M	208	208	208	185	185	185	162	92	69	69	M	339	308	308	277	277	246	216	154	123	123	M

EURs' Each

February-09

EURs' Each

TROY REPORT: 0.50+ carat

PEAR

TROY REPORT: 0.60+ carat

	IF	VVS1	VVS2	VS1	VS2	SI1	SI2	I1	I2	I3		IF	VVS1	VVS2	VS1	VS2	SI1	SI2	I1	I2	I3	
D	1836	1559	1420	1282	1178	970	831	658	520	381	D	2448	2079	1894	1709	1570	1293	1109	878	693	508	D
E	1594	1420	1316	1143	1039	866	693	624	485	346	E	2125	1894	1755	1524	1386	1155	924	831	647	462	E
F	1420	1316	1178	1074	970	831	658	589	450	346	F	1894	1755	1570	1432	1293	1109	878	785	600	462	F
G	1316	1178	1074	970	866	762	624	520	416	312	G	1755	1570	1432	1293	1155	1016	831	693	554	416	G
H	1178	1074	1005	901	831	658	589	485	381	312	H	1570	1432	1339	1201	1109	878	785	647	508	416	H
I	1005	901	866	797	727	658	589	450	381	277	I	1339	1201	1155	1062	970	878	785	600	508	370	I
J	797	727	693	658	624	589	554	416	381	277	J	1062	970	924	878	831	785	739	554	508	370	J
K	624	554	554	520	520	485	450	381	346	242	K	831	739	739	693	693	647	600	508	462	323	K
L	520	485	485	450	450	450	416	346	312	242	L	693	647	647	600	600	600	554	462	416	323	L
M	416	416	416	381	381	381	346	312	277	208	M	554	554	554	508	508	508	462	416	370	277	M

EURs' Each

February-09

EURs' Each

TROY REPORT: 0.70+ carat

PEAR

TROY REPORT: 0.80+ carat

	IF	VVS1	VVS2	VS1	VS2	SI1	SI2	I1	I2	I3		IF	VVS1	VVS2	VS1	VS2	SI1	SI2	I1	I2	I3	
D	3540	2764	2619	2473	2328	2085	1794	1261	873	582	D	4496	3510	3326	3141	2956	2648	2279	1601	1109	739	D
E	2813	2619	2522	2328	2134	1843	1600	1212	824	533	E	3572	3326	3202	2956	2710	2340	2032	1540	1047	677	E
F	2667	2522	2425	2231	1988	1746	1503	1164	776	533	F	3387	3202	3079	2833	2525	2217	1909	1478	985	677	F
G	2522	2376	2231	2037	1843	1552	1406	1115	776	485	G	3202	3018	2833	2587	2340	1971	1786	1416	985	616	G
H	2279	2085	2037	1891	1649	1406	1309	1018	727	485	H	2895	2648	2587	2402	2094	1786	1663	1293	924	616	H
I	1940	1794	1746	1600	1358	1212	1115	921	679	436	I	2463	2279	2217	2032	1724	1540	1416	1170	862	554	I
J	1552	1455	1406	1309	1261	1164	970	776	630	436	J	1971	1848	1786	1663	1601	1478	1232	985	801	554	J
K	1309	1212	1164	1115	1067	970	873	679	582	388	K	1663	1540	1478	1416	1355	1232	1109	862	739	493	K
L	1067	1018	970	921	921	873	824	582	485	388	L	1355	1293	1232	1170	1170	1109	1047	739	616	493	L
M	824	824	824	776	776	776	727	485	436	339	M	1047	1047	1047	985	985	985	924	616	554	431	M

INFORMATION IS DEEMED TO BE RELIABLE, BUT IS NOT GUARANTEED. PRICES REFLECT OUR OPINION OF CASH BASIS ASKING PRICES AND ARE NOT AN OFFERING TO SELL. © Copyright 2008 by Wayne D. Prentice, G.G. All rights reserved.

TROY DIAMOND REPORT®

www.troydiamondreport.com

Gold (Annual Moving Average): 633.32 EUR ♦♦ Unit: EUR (European Union Euro)

♦♦ World's Largest Economy ♦♦ Second Largest Currency ♦♦ 27 Member Countries ♦♦

EURs' Each

February-09

EURs' Each

TROY REPORT: 0.90+ carat

PEAR

TROY REPORT: 1.00+ carats

	IF	VVS1	VVS2	VS1	VS2	SI1	SI2	I1	I2	I3		IF	VVS1	VVS2	VS1	VS2	SI1	SI2	I1	I2	I3	
D	5958	4711	4573	4296	4018	3811	3326	2009	1455	901	D	8572	5758	5169	4908	4515	3992	3337	2094	1440	916	D
E	4711	4573	4296	4088	3880	3603	3118	1940	1386	831	E	5758	5169	4973	4777	4384	3795	3206	2028	1374	851	E
F	4573	4296	4018	3880	3672	3464	3048	1940	1316	831	F	5169	4973	4842	4580	4122	3664	3141	1963	1374	851	F
G	4296	4018	3880	3741	3464	3187	2841	1871	1247	762	G	4973	4842	4646	4319	3926	3403	2945	1832	1309	785	G
H	3741	3464	3326	3187	2979	2841	2494	1732	1247	762	H	4122	3861	3664	3468	3141	2879	2552	1767	1243	785	H
I	3326	3118	3048	2910	2702	2633	2286	1663	1178	693	I	3533	3403	3272	3141	2879	2617	2290	1701	1178	720	I
J	2841	2771	2702	2564	2494	2356	2079	1455	1039	693	J	3010	2879	2748	2617	2487	2290	2028	1440	982	720	J
K	2286	2217	2148	2079	2079	1940	1801	1247	901	624	K	2487	2421	2356	2290	2159	2028	1832	1309	851	654	K
L	1801	1732	1663	1594	1594	1524	1455	970	762	554	L	2028	1963	1898	1832	1701	1570	1505	1047	785	589	L
M	1386	1386	1386	1316	1316	1316	1247	762	693	554	M	1767	1701	1636	1570	1505	1374	1309	916	720	589	M

EURs' Each

February-09

EURs' Each

TROY REPORT: 1.25+ carats

PEAR

TROY REPORT: 1.50+ carats

	IF	VVS1	VVS2	VS1	VS2	SI1	SI2	I1	I2	I3		IF	VVS1	VVS2	VS1	VS2	SI1	SI2	I1	I2	I3	
D	12606	8468	7602	7217	6640	5870	4908	3079	2117	1347	D	14503	9977	9145	8868	8314	7760	6374	3788	2402	1386	D
E	8468	7602	7313	7025	6447	5581	4715	2983	2021	1251	E	9977	9145	8868	8591	8129	7575	6282	3695	2309	1386	E
F	7602	7313	7121	6736	6062	5389	4619	2887	2021	1251	F	9145	8868	8591	8129	7760	7298	6005	3510	2217	1293	F
G	7313	7121	6832	6351	5774	5004	4330	2694	1925	1155	G	8868	8591	8129	7852	7298	6651	5635	3418	2125	1201	G
H	6062	5677	5389	5100	4619	4234	3753	2598	1828	1155	H	7206	7021	6744	6467	6097	5635	4896	3048	2032	1109	H
I	5196	5004	4811	4619	4234	3849	3368	2502	1732	1059	I	6189	6005	5912	5635	5358	5081	4249	2864	1940	1109	I
J	4426	4234	4042	3849	3657	3368	2983	2117	1443	1059	J	4804	4711	4619	4434	4249	4065	3510	2402	1755	1016	J
K	3657	3560	3464	3368	3176	2983	2694	1925	1251	962	K	4157	4065	3972	3788	3603	3510	3141	2125	1570	1016	K
L	2983	2887	2791	2694	2502	2309	2213	1540	1155	866	L	3510	3418	3326	3233	2956	2864	2587	1848	1386	924	L
M	2598	2502	2406	2309	2213	2021	1925	1347	1059	866	M	2956	2864	2771	2679	2494	2402	2217	1570	1293	831	M

EURs' Each

February-09

EURs' Each

TROY REPORT: 1.75+ carats

PEAR

TROY REPORT: 2.00+ carats

	IF	VVS1	VVS2	VS1	VS2	SI1	SI2	I1	I2	I3		IF	VVS1	VVS2	VS1	VS2	SI1	SI2	I1	I2	I3	
D	21151	14550	13337	12933	12125	11316	9296	5523	3503	2021	D	30670	22294	20570	18722	17490	14165	10346	6035	3572	2217	D
E	14550	13337	12933	12529	11855	11047	9161	5389	3368	2021	E	22294	20570	18722	17490	15766	13549	10100	5912	3449	2094	E
F	13337	12933	12529	11855	11316	10643	8757	5119	3233	1886	F	20570	18722	17490	15766	14534	12933	9854	5666	3326	2094	F
G	12933	12529	11855	11451	10643	9700	8218	4985	3099	1751	G	18229	16998	15766	14534	13918	11701	9484	5420	3202	1971	G
H	10508	10239	9834	9430	8891	8218	7140	4446	2964	1617	H	14657	13426	12194	11578	10962	9854	8129	4927	3079	1848	H
I	9026	8757	8622	8218	7814	7410	6197	4176	2829	1617	I	11578	10962	10346	9731	9115	8622	7390	4557	2956	1848	I
J	7005	6871	6736	6467	6197	5928	5119	3503	2560	1482	J	8868	8499	8129	7760	7267	6898	6159	3695	2710	1724	J
K	6062	5928	5793	5523	5254	5119	4580	3099	2290	1482	K	7513	7144	6898	6528	6405	6159	5666	3326	2587	1601	K
L	5119	4985	4850	4715	4311	4176	3772	2694	2021	1347	L	5420	5173	4927	4557	4434	4311	4065	2833	2340	1478	L
M	4311	4176	4042	3907	3637	3503	3233	2290	1886	1212	M	4434	4188	3941	3818	3695	3695	3449	2587	2217	1355	M

INFORMATION IS DEEMED TO BE RELIABLE, BUT IS NOT GUARANTEED. PRICES REFLECT OUR OPINION OF CASH BASIS ASKING PRICES AND ARE NOT AN OFFERING TO SELL. © Copyright 2008 by Wayne D. Prentice, G.G. All rights reserved.

TROY DIAMOND REPORT®

www.troydiamondreport.com

Gold (Annual Moving Average): 633.32 EUR ♦♦ Unit: EUR (European Union Euro)

♦♦ World's Largest Economy ♦♦ Second Largest Currency ♦♦ 27 Member Countries ♦♦

EURs' Each

February-09

EURs' Each

TROY REPORT: 2.25+ carats

PEAR

TROY REPORT: 2.50+ carats

	IF	VVS1	VVS2	VS1	VS2	SI1	SI2	I1	I2	I3		IF	VVS1	VVS2	VS1	VS2	SI1	SI2	I1	I2	I3	
D	38816	28216	26033	23695	22136	17927	13095	7639	4521	2806	D	47921	34834	32140	29253	27329	22132	16166	9430	5581	3464	D
E	28216	26033	23695	22136	19954	17148	12783	7483	4365	2650	E	34834	32140	29253	27329	24634	21170	15781	9238	5389	3272	E
F	26033	23695	22136	19954	18395	16368	12471	7171	4209	2650	F	32140	29253	27329	24634	22710	20208	15396	8853	5196	3272	F
G	23072	21513	19954	18395	17615	14809	12003	6859	4053	2494	G	28483	26559	24634	22710	21748	18283	14819	8468	5004	3079	G
H	18551	16992	15433	14654	13874	12471	10289	6236	3897	2338	H	22902	20978	19053	18091	17129	15396	12702	7698	4811	2887	H
I	14654	13874	13095	12315	11536	10912	9353	5768	3741	2338	I	18091	17129	16166	15204	14242	13472	11547	7121	4619	2887	I
J	11224	10756	10289	9821	9197	8730	7794	4677	3430	2182	J	13857	13279	12702	12125	11355	10778	9623	5774	4234	2694	J
K	9509	9042	8730	8262	8106	7794	7171	4209	3274	2027	K	11740	11162	10778	10200	10008	9623	8853	5196	4042	2502	K
L	6859	6547	6236	5768	5612	5456	5144	3585	2962	1871	L	8468	8083	7698	7121	6928	6736	6351	4426	3657	2309	L
M	5612	5300	4988	4833	4677	4677	4365	3274	2806	1715	M	6928	6543	6159	5966	5774	5774	5389	4042	3464	2117	M

EURs' Each

February-09

EURs' Each

TROY REPORT: 2.75+ carats

PEAR

TROY REPORT: 3.00+ carats

	IF	VVS1	VVS2	VS1	VS2	SI1	SI2	I1	I2	I3		IF	VVS1	VVS2	VS1	VS2	SI1	SI2	I1	I2	I3	
D	57985	42150	38890	35396	33068	26780	19561	11411	6753	4192	D	88753	71917	63187	51963	44480	31178	21409	14758	7691	4365	D
E	42150	38890	35396	33068	29808	25616	19095	11178	6520	3959	E	69215	63603	58406	49053	41570	30139	20370	13718	7275	4157	E
F	38890	35396	33068	29808	27479	24452	18630	10712	6288	3959	F	60277	56744	51755	45104	38453	28060	19538	12887	6859	3949	F
G	34465	32136	29808	27479	26314	22123	17931	10246	6055	3726	G	52587	49053	46351	39284	34296	24942	19122	12263	6443	3741	G
H	27712	25383	23054	21890	20726	18630	15370	9315	5822	3493	H	43025	40947	37206	32009	27436	20785	17460	11224	6028	3741	H
I	21890	20726	19561	18397	17232	16301	13972	8616	5589	3493	I	32841	30970	29307	26813	22032	18291	15173	10185	5612	3533	I
J	16767	16068	15370	14671	13739	13041	11644	6986	5123	3260	J	23487	22448	21409	19954	18083	14550	12679	8106	5196	3326	J
K	14205	13507	13041	12342	12109	11644	10712	6288	4890	3027	K	18915	18291	17460	16836	14965	12471	11016	7275	4781	3118	K
L	10246	9781	9315	8616	8383	8151	7685	5356	4425	2794	L	13718	13095	12471	11432	10808	8938	8106	6028	4365	2702	L
M	8383	7918	7452	7219	6986	6986	6520	4890	4192	2562	M	10185	9769	9145	8522	8106	6859	6236	4988	4157	2494	M

EURs' Each

February-09

EURs' Each

TROY REPORT: 3.25+ carats

PEAR

TROY REPORT: 3.50+ carats

	IF	VVS1	VVS2	VS1	VS2	SI1	SI2	I1	I2	I3		IF	VVS1	VVS2	VS1	VS2	SI1	SI2	I1	I2	I3	
D	106832	86567	76059	62548	53541	37529	25770	17764	9257	5254	D	120803	97887	86005	70728	60543	42437	29140	20087	10468	5941	D
E	83314	76559	70304	59045	50039	36278	24519	16513	8757	5004	E	94209	86570	79498	66767	56582	41022	27725	18672	9902	5658	E
F	72556	68303	62298	54292	46286	33776	23518	15512	8256	4754	F	82044	77234	70445	61391	52338	38193	26594	17540	9336	5375	F
G	63299	59045	55793	47286	41282	30023	23018	14761	7756	4503	G	71576	66767	63089	53470	46680	33949	26028	16692	8770	5092	G
H	51790	49288	44784	38530	33025	25019	21016	13510	7256	4503	H	58562	55733	50641	43568	37344	28291	23764	15277	8204	5092	H
I	39530	37279	35277	32275	26520	22017	18264	12259	6755	4253	I	44700	42154	39890	36495	29988	24896	20652	13863	7639	4809	I
J	28272	27021	25770	24018	21767	17513	15262	9758	6255	4003	J	31969	30554	29140	27159	24613	19804	17258	11033	7073	4527	J
K	22768	22017	21016	20266	18014	15012	13260	8757	5754	3753	K	25745	24896	23764	22916	20370	16975	14994	9902	6507	4244	K
L	16513	15762	15012	13761	13010	10758	9758	7256	5254	3253	L	18672	17823	16975	15560	14711	12165	11033	8204	5941	3678	L
M	12259	11759	11008	10258	9758	8256	7506	6005	5004	3002	M	13863	13297	12448	11599	11033	9336	8487	6790	5658	3395	M

INFORMATION IS DEEMED TO BE RELIABLE, BUT IS NOT GUARANTEED. PRICES REFLECT OUR OPINION OF CASH BASIS ASKING PRICES AND ARE NOT AN OFFERING TO SELL. © Copyright 2008 by Wayne D. Prentice, G.G. All rights reserved.

TROY DIAMOND REPORT®

www.troydiamondreport.com

Gold (Annual Moving Average): 633.32 EUR ♦♦ Unit: EUR (European Union Euro)

♦♦ World's Largest Economy ♦♦ Second Largest Currency ♦♦ 27 Member Countries ♦♦

EURs' Each

February-09

EURs' Each

TROY REPORT: 3.75+ carats

PEAR

TROY REPORT: 4.00+ carats

	IF	VVS1	VVS2	VS1	VS2	SI1	SI2	I1	I2	I3		IF	VVS1	VVS2	VS1	VS2	SI1	SI2	I1	I2	I3	
D	141758	114867	100924	82997	71045	49798	34195	23571	12283	6972	D	162125	130808	117783	104480	90624	53764	36859	21894	11917	6651	D
E	110551	101588	93288	78349	66397	48138	32535	21911	11620	6640	E	126928	117783	110023	95889	84249	51824	35473	20508	11085	6374	E
F	96276	90632	82665	72041	61417	44818	31207	20583	10956	6308	F	115012	110023	101709	87852	74827	48499	34365	19400	10531	6097	F
G	83993	78349	74033	62745	54778	39838	30543	19587	10292	5976	G	96166	87298	79815	76212	64573	44896	33533	18291	9977	5820	G
H	68721	65401	59426	51126	43822	33199	27887	17927	9628	5976	H	77321	72887	66790	62079	52379	38799	29376	16905	9423	5543	H
I	52454	49466	46810	42826	35191	29215	24235	16267	8964	5644	I	56813	54319	51270	47667	44619	33811	25774	14688	8868	5266	I
J	37514	35855	34195	31871	28883	23239	20251	12947	8300	5312	J	41293	39630	38245	36028	34365	27436	22448	12471	8314	4711	J
K	30211	29215	27887	26891	23903	19919	17595	11620	7636	4980	K	32702	31039	29654	28545	26605	21339	19122	11363	7483	4434	K
L	21911	20915	19919	18259	17263	14275	12947	9628	6972	4316	L	23279	22725	22171	21062	20231	16351	14411	9423	6651	4157	L
M	16267	15603	14607	13611	12947	10956	9960	7968	6640	3984	M	18291	17460	16905	16351	16074	13303	11640	7760	6097	3880	M

EURs' Each

February-09

EURs' Each

TROY REPORT: 4.25+ carats

PEAR

TROY REPORT: 4.50+ carats

	IF	VVS1	VVS2	VS1	VS2	SI1	SI2	I1	I2	I3		IF	VVS1	VVS2	VS1	VS2	SI1	SI2	I1	I2	I3	
D	191397	154427	139049	123345	106986	63472	43514	25847	14069	7852	D	222922	179861	161952	143661	124607	73926	50681	30104	16386	9145	D
E	149846	139049	129888	113202	99461	61182	41878	24211	13087	7525	E	174527	161952	151282	131848	115843	71259	48776	28199	15242	8764	E
F	135778	129888	120073	103714	88337	57256	40570	22902	12433	7198	F	158141	151282	139850	120797	102887	66686	47252	26674	14480	8383	F
G	113530	103060	94226	89973	76232	53002	39588	21594	11778	6871	G	132229	120035	109746	104792	88788	61732	46109	25150	13718	8002	G
H	91282	86047	78849	73287	61836	45804	34681	19958	11124	6543	H	106316	100219	91836	85358	72021	53349	40393	23245	12956	7621	H
I	67071	64126	60527	56274	52675	39915	30427	17340	10470	6216	I	78118	74688	70497	65543	61351	46490	35439	20196	12194	7240	I
J	48749	46786	45150	42533	40570	32390	26501	14723	9815	5562	J	56778	54492	52587	49538	47252	37725	30866	17148	11432	6478	J
K	38607	36644	35008	33699	31409	25192	22575	13414	8834	5235	K	44965	42679	40774	39249	36582	29342	26293	15624	10289	6097	K
L	27483	26828	26174	24865	23884	19303	17013	11124	7852	4908	L	32009	31247	30485	28961	27818	22483	19815	12956	9145	5716	L
M	21594	20612	19958	19303	18976	15704	13741	9161	7198	4580	M	25150	24007	23245	22483	22102	18291	16005	10670	8383	5335	M

EURs' Each

February-09

EURs' Each

TROY REPORT: 4.75+ carats

PEAR

TROY REPORT: 5.00+ carats

	IF	VVS1	VVS2	VS1	VS2	SI1	SI2	I1	I2	I3		IF	VVS1	VVS2	VS1	VS2	SI1	SI2	I1	I2	I3	
D	246002	198483	178719	158534	137509	81580	55929	33221	18082	10092	D	318861	243899	223788	198191	162721	96901	62529	30716	17186	9873	D
E	192596	178719	166945	145498	127837	78636	53826	31118	16821	9672	E	236952	223788	205139	182833	151751	93245	60701	28888	16455	9142	E
F	174514	166945	154329	133304	113539	73590	52144	29436	15980	9251	F	217571	205139	190878	168938	131274	84835	57410	27791	15724	8410	F
G	145919	132463	121109	115642	97980	68124	50882	27754	15139	8831	G	172960	158333	145901	128714	108603	76424	54484	26328	14992	8045	G
H	117324	110596	101344	94196	79478	58872	44575	25651	14298	8410	H	139684	129811	117379	105312	90685	65089	47171	24134	14261	7679	H
I	86206	82421	77795	72329	67703	51303	39108	22287	13457	7990	I	94707	89223	86663	78618	73499	53387	39492	22306	13530	6948	I
J	62657	60134	58031	54667	52144	41631	34062	18923	12615	7149	J	68380	66917	63260	61432	57044	44246	35470	20112	12433	6582	J
K	49621	47098	44995	43313	40370	32380	29016	17241	11354	6728	K	54484	51925	50828	47902	45708	36201	29619	18283	11336	6216	K
L	35323	34482	33641	31959	30698	24810	21867	14298	10092	6308	L	38395	36932	35835	35104	33641	27059	22306	16089	10239	5851	L
M	27754	26493	25651	24810	24390	20185	17662	11774	9251	5887	M	32179	31082	29985	28156	26694	21940	19380	12067	9142	5485	M

TROY DIAMOND REPORT®

www.troydiamondreport.com

Gold (Annual Moving Average): 633.32 EUR ♦♦ Unit: EUR (European Union Euro)

♦♦ World's Largest Economy ♦♦ Second Largest Currency ♦♦ 27 Member Countries ♦♦

EURs' Each

February-09

EURs' Each

TROY REPORT: 5.25+ carats

PEAR

TROY REPORT: 5.50+ carats

	IF	VVS1	VVS2	VS1	VS2	SI1	SI2	I1	I2	I3		IF	VVS1	VVS2	VS1	VS2	SI1	SI2	I1	I2	I3	
D	352425	269573	247344	219053	179850	107102	69111	33949	18995	10912	D	387668	296530	272079	240958	197835	117812	76022	37344	20895	12003	D
E	261894	247344	226732	202079	167725	103060	67090	31928	18187	10104	E	288083	272079	249405	222286	184498	113366	73799	35121	20006	11114	E
F	240474	226732	210970	186721	145092	93764	63453	30716	17379	9296	F	264521	249405	232067	205393	159602	103141	69798	33788	19117	10225	F
G	191166	175000	161259	142263	120035	84469	60219	29099	16570	8891	G	210283	192500	177385	156490	132038	92916	66241	32009	18227	9781	G
H	154388	143476	129734	116397	100231	71940	52136	26674	15762	8487	H	169827	157823	142708	128037	110254	79134	57350	29342	17338	9336	H
I	104677	98614	95785	86894	81236	59007	43649	24654	14954	7679	I	115144	108476	105364	95583	89359	64908	48014	27119	16449	8447	I
J	75577	73961	69919	67898	63049	48903	39203	22229	13741	7275	J	83135	81357	76911	74688	69353	53793	43124	24452	15115	8002	J
K	60219	57390	56178	52945	50520	40012	32737	20208	12529	6871	K	66241	63129	61796	58239	55572	44013	36010	22229	13782	7558	K
L	42437	40820	39607	38799	37182	29908	24654	17783	11316	6467	L	46680	44902	43568	42679	40901	32898	27119	19561	12448	7113	L
M	35566	34353	33141	31120	29503	24249	21420	13337	10104	6062	M	39122	37789	36455	34232	32454	26674	23562	14671	11114	6669	M

EURs' Each

February-09

EURs' Each

TROY REPORT: 5.75+ carats

PEAR

TROY REPORT: 6-6.99 carats

	IF	VVS1	VVS2	VS1	VS2	SI1	SI2	I1	I2	I3		IF	VVS1	VVS2	VS1	VS2	SI1	SI2	I1	I2	I3	
D	424588	324771	297991	263907	216676	129032	83262	40901	22885	13147	D	463187	354296	325081	287898	236374	140762	90831	44619	24965	14342	D
E	315520	297991	273158	243457	202069	124163	80828	38466	21911	12173	E	344203	325081	297991	265589	220439	135450	88176	41963	23903	13279	E
F	289713	273158	254169	224954	174802	112964	76445	37005	20937	11199	F	316051	297991	277275	245404	190693	123233	83395	40370	22841	12217	F
G	230310	210833	194278	171393	144613	101765	72550	35058	19963	10712	G	251247	230000	211940	186975	157760	111016	79146	38245	21778	11686	G
H	186001	172854	156299	140231	120754	86671	62812	32136	18990	10225	H	202910	188568	170508	152979	131732	94550	68522	35058	20716	11155	H
I	126111	118807	115398	104686	97870	71089	52587	29702	18016	9251	I	137575	129607	125889	114203	106767	77552	57367	32402	19654	10092	I
J	91053	89105	84236	81801	75958	58916	47231	26780	16555	8764	J	99330	97206	91894	89238	82864	64273	51524	29215	18060	9561	J
K	72550	69142	67681	63786	60864	48204	39440	24346	15094	8278	K	79146	75427	73834	69584	66397	52587	43025	26559	16467	9030	K
L	51126	49178	47717	46744	44796	36032	29702	21424	13634	7791	L	55774	53649	52055	50993	48868	39307	32402	23372	14873	8499	L
M	42848	41388	39927	37492	35545	29215	25806	16068	12173	7304	M	46744	45150	43557	40901	38776	31871	28152	17529	13279	7968	M

EURs' Each

February-09

EURs' Each

TROY REPORT: 7-7.99 carats

PEAR

TROY REPORT: 8-8.99 carats

	IF	VVS1	VVS2	VS1	VS2	SI1	SI2	I1	I2	I3		IF	VVS1	VVS2	VS1	VS2	SI1	SI2	I1	I2	I3	
D	563880	431317	395751	350485	287760	171363	110577	54319	30393	17460	D	698137	534011	489977	433934	356274	212163	136905	67252	37629	21617	D
E	419030	395751	362771	323326	268360	164896	107344	51085	29099	16166	E	518799	489977	449146	400308	332256	204157	132902	63249	36028	20015	E
F	384758	362771	337552	298753	232148	150023	101524	49146	27806	14873	F	476367	449146	417922	369885	287421	185743	125697	60847	34426	18414	F
G	305866	280000	258014	227621	192055	135150	96351	46559	26513	14226	G	378691	346667	319446	281817	237783	167329	119292	57644	32825	17614	G
H	247021	229561	207575	186236	160370	115104	83418	42679	25219	13580	H	305835	284219	256998	230577	198553	142510	103279	52841	31224	16813	H
I	167483	157783	153256	139030	129977	94411	69838	39446	23926	12286	I	207360	195350	189746	172132	160924	116890	86467	48838	29623	15212	I
J	120924	118337	111871	108637	100878	78245	62725	35566	21986	11640	J	149715	146513	138507	134503	124896	96875	77660	44034	27221	14411	J
K	96351	91825	89885	84711	80831	64018	52379	32333	20046	10993	K	119292	113687	111286	104881	100077	79261	64850	40031	24819	13610	K
L	67898	65312	63372	62079	59492	47852	39446	28453	18106	10346	L	84065	80862	78460	76859	73657	59246	48838	35227	22417	12810	L
M	56905	54965	53025	49792	47206	38799	34273	21339	16166	9700	M	70454	68052	66561	61647	58445	48037	42433	26420	20015	12009	M

INFORMATION IS DEEMED TO BE RELIABLE, BUT IS NOT GUARANTEED. PRICES REFLECT OUR OPINION OF CASH BASIS ASKING PRICES AND ARE NOT AN OFFERING TO SELL. © Copyright 2008 by Wayne D. Prentice, G.G. All rights reserved.

TROY DIAMOND REPORT®

www.troydiamondreport.com

Gold (Annual Moving Average): 633.32 EUR ♦♦ Unit: EUR (European Union Euro)

♦♦ World's Largest Economy ♦♦ Second Largest Currency ♦♦ 27 Member Countries ♦♦

EURs' Each

February-09

1000EURs' Each

TROY REPORT: 9-9.99 carats

PEAR

TROY REPORT: 10-10.99 carats

	IF	VVS1	VVS2	VS1	VS2	SI1	SI2	I1	I2	I3		IF	VVS1	VVS2	VS1	VS2	SI1	SI2	I1	I2	I3	
D	845820	646975	593626	525728	431640	257044	165866	81478	45589	26189	D	1168	908	821	707	550	340	232	73	45	22	D
E	628545	593626	544157	484989	402541	247344	161016	76628	43649	24249	E	908	821	735	646	513	315	224	69	43	21	E
F	577136	544157	506328	448129	348222	225035	152286	73718	41709	22309	F	822	735	685	592	445	290	213	65	41	19	F
G	458799	420000	387021	341432	288083	202725	144527	69838	39769	21339	G	607	566	526	481	396	263	202	62	38	18	G
H	370531	344342	311363	279353	240554	172656	125127	64018	37829	20370	H	485	436	404	372	316	227	179	58	36	18	H
I	251224	236674	229885	208545	194965	141617	104758	59169	35889	18430	I	339	332	316	287	259	194	156	54	34	16	I
J	181386	177506	167806	162956	151316	117367	94088	53349	32979	17460	J	259	251	235	231	210	165	135	50	32	15	J
K	144527	137737	134827	127067	121247	96028	78568	48499	30069	16490	K	202	190	178	174	159	132	112	46	29	15	K
L	101848	97968	95058	93118	89238	71778	59169	42679	27159	15520	L	145	138	134	129	117	99	78	42	27	14	L
M	85358	82448	79538	74688	70808	58199	51409	32009	24249	14550	M	118	113	109	105	102	85	69	35	24	13	M

"Percentage Relationships"

TROY DIAMOND REPORT®

www.troydiamondreport.com

Percent (%) Change from Top Quality (D, IF)

February-09

TROY REPORT: (0.18-0.22 CT.)										PEARS			TROY REPORT: (0.23-0.29 CT.)						(% increase) 23%		
	IF-VVS	VS	SI1	SI2	I1	I2	I3			IF-VVS	VS	SI1	SI2	I1	I2	I3					
D-F	100%	85%	78%	70%	52%	41%	26%	D-F		100%	82%	76%	64%	45%	36%	24%	D-F				
G-H	85%	78%	70%	63%	48%	37%	22%	G-H		88%	70%	64%	58%	42%	33%	21%	G-H				
I-J	74%	70%	63%	56%	41%	32%	19%	I-J		73%	64%	58%	52%	39%	30%	18%	I-J				
K-L	62%	59%	47%	44%	33%	28%	17%	K-L		57%	51%	48%	42%	33%	24%	16%	K-L				
M-N	47%	44%	40%	36%	27%	21%	13%	M-N		42%	39%	36%	33%	24%	18%	12%	M-N				

TROY REPORT: (0.3-0.39 CT.) 81%										PEARS			TROY REPORT: (0.4-0.49 CT.)						19%						
	IF	VVS1	VVS2	VS1	VS2	SI1	SI2	I1	I2	I3			IF	VVS1	VVS2	VS1	VS2	SI1	SI2	I1	I2	I3			
D	100%	94%	84%	77%	65%	58%	48%	39%	29%	19%	D		100%	92%	84%	78%	68%	59%	54%	35%	27%	22%	D		
E	94%	87%	77%	65%	55%	52%	45%	35%	26%	19%	E		92%	86%	78%	73%	65%	54%	49%	32%	24%	19%	E		
F	87%	81%	68%	58%	52%	48%	42%	32%	23%	16%	F		86%	81%	73%	68%	62%	51%	46%	30%	22%	16%	F		
G	81%	71%	61%	55%	48%	45%	39%	29%	23%	16%	G		81%	73%	68%	62%	57%	49%	41%	27%	22%	16%	G		
H	65%	61%	55%	52%	45%	42%	35%	26%	19%	16%	H		70%	65%	59%	57%	51%	46%	38%	24%	19%	16%	H		
I	52%	48%	45%	45%	42%	39%	32%	26%	19%	13%	I		57%	54%	51%	49%	43%	41%	35%	24%	19%	14%	I		
J	42%	39%	39%	35%	35%	32%	29%	23%	16%	13%	J		46%	43%	43%	41%	35%	32%	30%	22%	16%	14%	J		
K	35%	32%	29%	29%	29%	26%	23%	19%	16%	13%	K		41%	35%	32%	30%	30%	27%	22%	16%	14%	14%	K		
L	32%	29%	29%	26%	26%	26%	23%	13%	13%	10%	L		35%	32%	30%	27%	27%	24%	22%	16%	14%	11%	L		
M	29%	29%	29%	26%	26%	26%	23%	13%	10%	10%	M		30%	27%	27%	24%	24%	22%	19%	14%	11%	11%	M		

TROY REPORT: (0.5-0.69 CT.) 48%										PEARS			TROY REPORT: (0.7-0.89 CT.)						43%						
	IF	VVS1	VVS2	VS1	VS2	SI1	SI2	I1	I2	I3			IF	VVS1	VVS2	VS1	VS2	SI1	SI2	I1	I2	I3			
D	100%	85%	77%	70%	64%	53%	45%	36%	28%	21%	D		100%	78%	74%	70%	66%	59%	51%	36%	25%	16%	D		
E	87%	77%	72%	62%	57%	47%	38%	34%	26%	19%	E		79%	74%	71%	66%	60%	52%	45%	34%	23%	15%	E		
F	77%	72%	64%	58%	53%	45%	36%	32%	25%	19%	F		75%	71%	68%	63%	56%	49%	42%	33%	22%	15%	F		
G	72%	64%	58%	53%	47%	42%	34%	28%	23%	17%	G		71%	67%	63%	58%	52%	44%	40%	32%	22%	14%	G		
H	64%	58%	55%	49%	45%	36%	32%	26%	21%	17%	H		64%	59%	58%	53%	47%	40%	37%	29%	21%	14%	H		
I	55%	49%	47%	43%	40%	36%	32%	25%	21%	15%	I		55%	51%	49%	45%	38%	34%	32%	26%	19%	12%	I		
J	43%	40%	38%	36%	34%	32%	30%	23%	21%	15%	J		44%	41%	40%	37%	36%	33%	27%	22%	18%	12%	J		
K	34%	30%	30%	28%	28%	26%	25%	21%	19%	13%	K		37%	34%	33%	32%	30%	27%	25%	19%	16%	11%	K		
L	28%	26%	26%	25%	25%	25%	23%	19%	17%	13%	L		30%	29%	27%	26%	26%	25%	23%	16%	14%	11%	L		
M	23%	23%	23%	21%	21%	21%	19%	17%	15%	11%	M		23%	23%	23%	22%	22%	22%	21%	14%	12%	10%	M		

TROY REPORT: (0.9-0.99 CT.) 8%										PEARS			TROY REPORT: (1-1.49 CT.)						54%						
	IF	VVS1	VVS2	VS1	VS2	SI1	SI2	I1	I2	I3			IF	VVS1	VVS2	VS1	VS2	SI1	SI2	I1	I2	I3			
D	100%	79%	77%	72%	67%	64%	56%	34%	24%	15%	D		100%	67%	60%	57%	53%	47%	39%	24%	17%	11%	D		
E	79%	77%	72%	69%	65%	60%	52%	33%	23%	14%	E		67%	60%	58%	56%	51%	44%	37%	24%	16%	10%	E		
F	77%	72%	67%	65%	62%	58%	51%	33%	22%	14%	F		60%	58%	56%	53%	48%	43%	37%	23%	16%	10%	F		
G	72%	67%	65%	63%	58%	53%	48%	31%	21%	13%	G		58%	56%	54%	50%	46%	40%	34%	21%	15%	9%	G		
H	63%	58%	56%	53%	50%	48%	42%	29%	21%	13%	H		48%	45%	43%	40%	37%	34%	30%	21%	15%	9%	H		
I	56%	52%	51%	49%	45%	44%	38%	28%	20%	12%	I		41%	40%	38%	37%	34%	31%	27%	20%	14%	8%	I		
J	48%	47%	45%	43%	42%	40%	35%	24%	17%	12%	J		35%	34%	32%	31%	29%	27%	24%	17%	11%	8%	J		
K	38%	37%	36%	35%	35%	33%	30%	21%	15%	10%	K		29%	28%	27%	27%	25%	24%	21%	15%	10%	8%	K		
L	30%	29%	28%	27%	27%	26%	24%	16%	13%	9%	L		24%	23%	22%	21%	20%	18%	18%	12%	9%	7%	L		
M	23%	23%	23%	22%	22%	22%	21%	13%	12%	9%	M		21%	20%	19%	18%	18%	16%	15%	11%	8%	7%	M		

Information is deemed to be reliable, but is not guaranteed. PRICES REFLECT OUR OPINION AND ARE NOT AN OFFERING TO SELL.

© Copyright 2008 by Wayne D. Prentice, G.G. All rights reserved.

TROY DIAMOND REPORT[®]

www.troydiamondreport.com

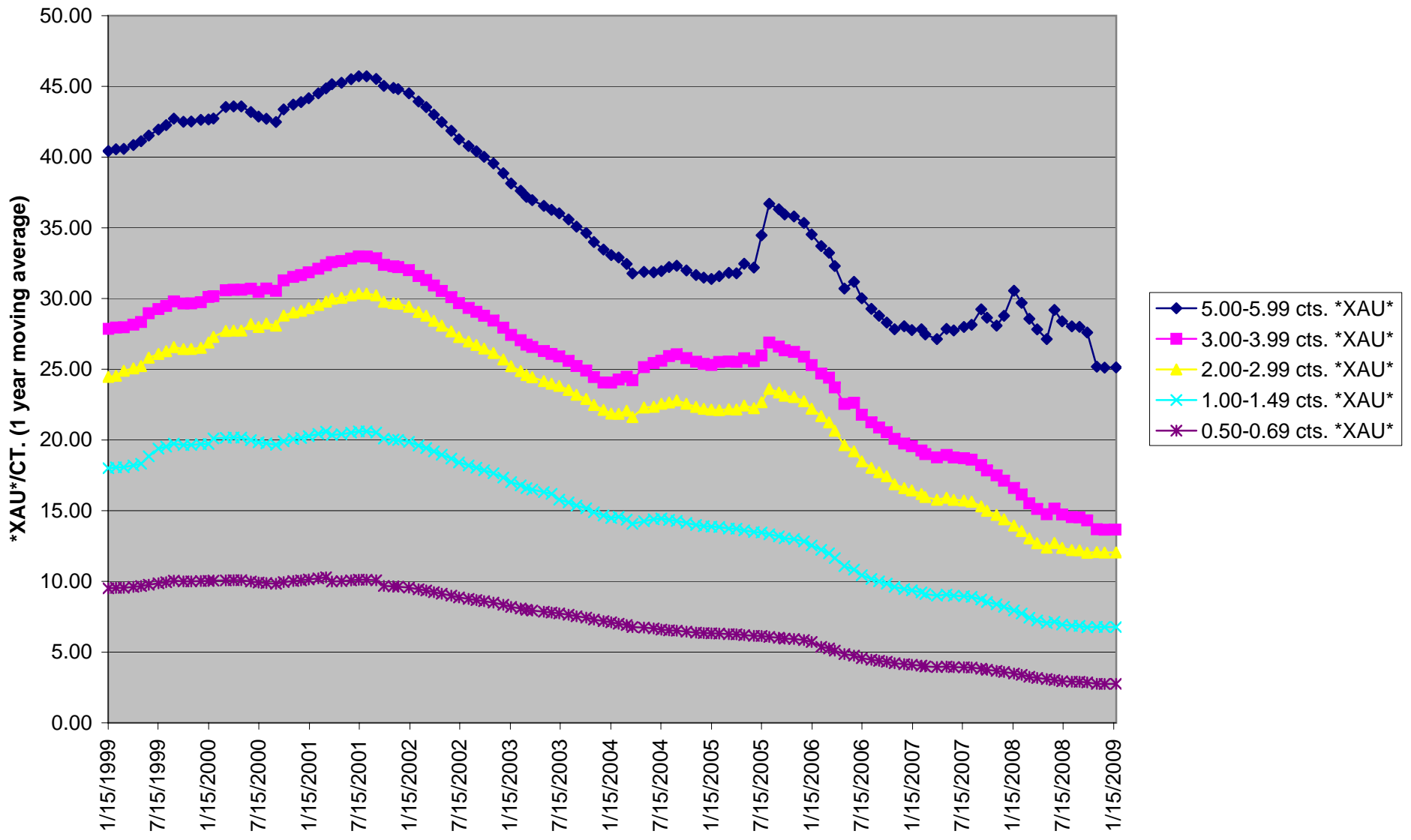
Percent (%) Change from Top Quality (D, IF) February-09

TROY REPORT: (1.5-1.99 CT.)											26%	PEARS											TROY REPORT: (2-2.99 CT.)											51%	(% increase)		
	IF	VVS1	VVS2	VS1	VS2	SI1	SI2	I1	I2	I3		IF	VVS1	VVS2	VS1	VS2	SI1	SI2	I1	I2	I3		IF	VVS1	VVS2	VS1	VS2	SI1	SI2	I1	I2	I3					
D	100%	69%	63%	61%	57%	54%	44%	26%	17%	10%	D	100%	73%	67%	61%	57%	46%	34%	20%	12%	7%	D	100%	73%	67%	61%	57%	46%	34%	20%	12%	7%	D				
E	69%	63%	61%	59%	56%	52%	43%	25%	16%	10%	E	73%	67%	61%	57%	51%	44%	33%	19%	11%	7%	E	73%	67%	61%	57%	51%	44%	33%	19%	11%	7%	E				
F	63%	61%	59%	56%	54%	50%	41%	24%	15%	9%	F	67%	61%	57%	51%	47%	42%	32%	18%	11%	7%	F	67%	61%	57%	51%	47%	42%	32%	18%	11%	7%	F				
G	61%	59%	56%	54%	50%	46%	39%	24%	15%	8%	G	59%	55%	51%	47%	45%	38%	31%	18%	10%	6%	G	59%	55%	51%	47%	45%	38%	31%	18%	10%	6%	G				
H	50%	48%	46%	45%	42%	39%	34%	21%	14%	8%	H	48%	44%	40%	38%	36%	32%	27%	16%	10%	6%	H	48%	44%	40%	38%	36%	32%	27%	16%	10%	6%	H				
I	43%	41%	41%	39%	37%	35%	29%	20%	13%	8%	I	38%	36%	34%	32%	30%	28%	24%	15%	10%	6%	I	38%	36%	34%	32%	30%	28%	24%	15%	10%	6%	I				
J	33%	32%	32%	31%	29%	28%	24%	17%	12%	7%	J	29%	28%	27%	25%	24%	22%	20%	12%	9%	6%	J	29%	28%	27%	25%	24%	22%	20%	12%	9%	6%	J				
K	29%	28%	27%	26%	25%	24%	22%	15%	11%	7%	K	24%	23%	22%	21%	21%	20%	18%	11%	8%	5%	K	24%	23%	22%	21%	21%	20%	18%	11%	8%	5%	K				
L	24%	24%	23%	22%	20%	20%	18%	13%	10%	6%	L	18%	17%	16%	15%	14%	14%	13%	9%	8%	5%	L	18%	17%	16%	15%	14%	14%	13%	9%	8%	5%	L				
M	20%	20%	19%	18%	17%	17%	15%	11%	9%	6%	M	14%	14%	13%	12%	12%	12%	11%	8%	7%	4%	M	14%	14%	13%	12%	12%	12%	11%	8%	7%	4%	M				

TROY REPORT: (3-3.99 CT.)											75%	PEARS											TROY REPORT: (4-4.99 CT.)											41%			
	IF	VVS1	VVS2	VS1	VS2	SI1	SI2	I1	I2	I3		IF	VVS1	VVS2	VS1	VS2	SI1	SI2	I1	I2	I3		IF	VVS1	VVS2	VS1	VS2	SI1	SI2	I1	I2	I3					
D	100%	81%	71%	59%	50%	35%	24%	17%	9%	5%	D	100%	81%	73%	64%	56%	33%	23%	14%	7%	4%	D	100%	81%	73%	64%	56%	33%	23%	14%	7%	4%	D				
E	78%	72%	66%	55%	47%	34%	23%	15%	8%	5%	E	78%	73%	68%	59%	52%	32%	22%	13%	7%	4%	E	78%	73%	68%	59%	52%	32%	22%	13%	7%	4%	E				
F	68%	64%	58%	51%	43%	32%	22%	15%	8%	4%	F	71%	68%	63%	54%	46%	30%	21%	12%	6%	4%	F	71%	68%	63%	54%	46%	30%	21%	12%	6%	4%	F				
G	59%	55%	52%	44%	39%	28%	22%	14%	7%	4%	G	59%	54%	49%	47%	40%	28%	21%	11%	6%	4%	G	59%	54%	49%	47%	40%	28%	21%	11%	6%	4%	G				
H	48%	46%	42%	36%	31%	23%	20%	13%	7%	4%	H	48%	45%	41%	38%	32%	24%	18%	10%	6%	3%	H	48%	45%	41%	38%	32%	24%	18%	10%	6%	3%	H				
I	37%	35%	33%	30%	25%	21%	17%	11%	6%	4%	I	35%	34%	32%	29%	28%	21%	16%	9%	5%	3%	I	35%	34%	32%	29%	28%	21%	16%	9%	5%	3%	I				
J	26%	25%	24%	22%	20%	16%	14%	9%	6%	4%	J	25%	24%	24%	22%	21%	17%	14%	8%	5%	3%	J	25%	24%	24%	22%	21%	17%	14%	8%	5%	3%	J				
K	21%	21%	20%	19%	17%	14%	12%	8%	5%	4%	K	20%	19%	18%	18%	16%	13%	12%	7%	5%	3%	K	20%	19%	18%	18%	16%	13%	12%	7%	5%	3%	K				
L	15%	15%	14%	13%	12%	10%	9%	7%	5%	3%	L	14%	14%	14%	13%	12%	10%	9%	6%	4%	3%	L	14%	14%	14%	13%	12%	10%	9%	6%	4%	3%	L				
M	11%	11%	10%	10%	9%	8%	7%	6%	5%	3%	M	11%	11%	10%	10%	10%	8%	7%	5%	4%	2%	M	11%	11%	10%	10%	10%	8%	7%	5%	4%	2%	M				

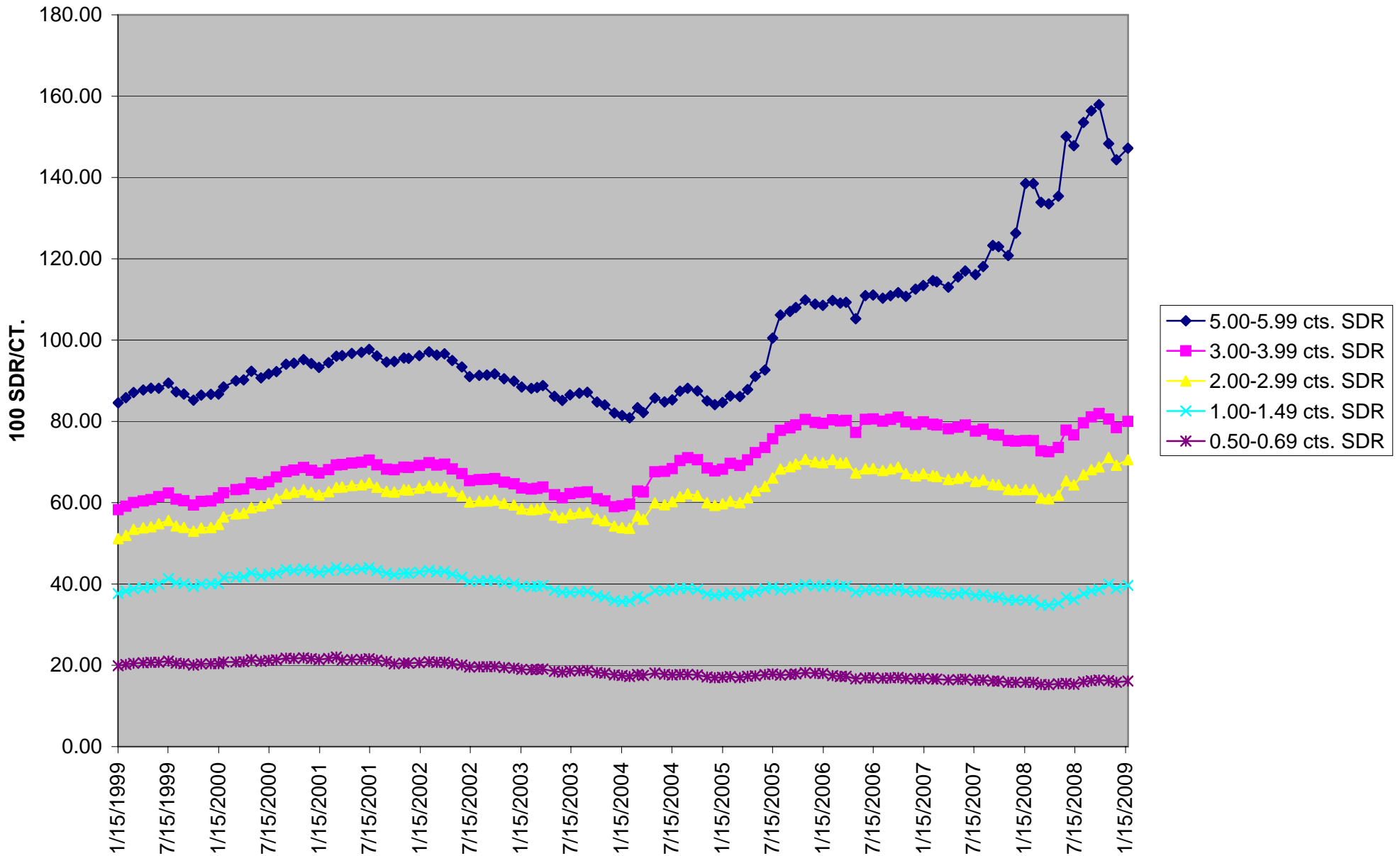
TROY REPORT: (5-5.99 CT.)											45%	PEARS											TROY REPORT: (10-10.99 CT.)											146%			
	IF	VVS1	VVS2	VS1	VS2	SI1	SI2	I1	I2	I3		IF	VVS1	VVS2	VS1	VS2	SI1	SI2	I1	I2	I3		IF	VVS1	VVS2	VS1	VS2	SI1	SI2	I1	I2	I3					
D	100%	76%	70%	62%	51%	30%	20%	10%	5%	3%	D	100%	78%	70%	61%	47%	29%	20%	6%	4%	2%	D	100%	78%	70%	61%	47%	29%	20%	6%	4%	2%	D				
E	74%	70%	64%	57%	48%	29%	19%	9%	5%	3%	E	78%	70%	63%	55%	44%	27%	19%	6%	4%	2%	E	78%	70%	63%	55%	44%	27%	19%	6%	4%	2%	E				
F	68%	64%	60%	53%	41%	27%	18%	9%	5%	3%	F	70%	63%	59%	51%	38%	25%	18%	6%	3%	2%	F	70%	63%	59%	51%	38%	25%	18%	6%	3%	2%	F				
G	54%	50%	46%	40%	34%	24%	17%	8%	5%	3%	G	52%	48%	45%	41%	34%	23%	17%	5%	3%	2%	G	52%	48%	45%	41%	34%	23%	17%	5%	3%	2%	G				
H	44%	41%	37%	33%	28%	20%	15%	8%	4%	2%	H	42%	37%	35%	32%	27%	19%	15%	5%	3%	2%	H	42%	37%	35%	32%	27%	19%	15%	5%	3%	2%	H				
I	30%	28%	27%	25%	23%	17%	12%	7%	4%	2%	I	29%	28%	27%	25%	22%	17%	13%	5%	3%	1%	I	29%	28%	27%	25%	22%	17%	13%	5%	3%	1%	I				
J	21%	21%	20%	19%	18%	14%	11%	6%	4%	2%	J	22%	21%	20%	20%	18%	14%	12%	4%	3%	1%	J	22%	21%	20%	20%	18%	14%	12%	4%	3%	1%	J				
K	17%	16%	16%	15%	14%	11%	9%	6%	4%	2%	K	17%	16%	15%	15%	14%	11%	10%	4%	3%	1%	K	17%	16%	15%	15%	14%	11%	10%	4%	3%	1%	K				
L	12%	12%	11%	11%	11%	8%	7%	5%	3%	2%	L	12%	12%	11%	11%	10%	9%	7%	4%	2%	1%	L	12%	12%	11%	11%	10%	9%	7%	4%	2%	1%	L				
M	10%	10%	9%	9%	8%	7%	6%	4%	3%	2%	M	10%	10%	9%	9%	9%	7%	6%	3%	2%	1%	M	10%	10%	9%	9%	9%	7%	6%	3%	2%	1%	M				

TROY DIAMOND REPORT: Round Brilliant H, SI-1 Reference: *XAU*/CT. (1yr MA)
(Exchange to Gold's 1 Year Moving Average in Troy Ounces/Carat)



TROY DIAMOND REPORT: Round Brilliant H, SI-1 Reference: SDR/CT.

◆◆ Weighted Basket of the World's Top 4 Currencies ◆◆ SDR: IMF's "Special Drawing Rights" ◆◆
◆◆ International Reserve Asset ◆◆



TROY DIAMOND REPORT: Round Brilliant H, SI-1 Reference: Annual % Change in 1 Year Moving Average in USD (*USD*)

